

Historic, Archive Document

Do not assume content reflects current scientific knowledge, policies, or practices.



Thousands Ordered Too Late in Last Spring's Fruit Tree Sell-Out!

THESE TREES WERE IMPOSSIBLE TO OBTAIN



PLUM TREES
Very Scarce



PEAR TREES — Not
enough last spring



PEACH TREES — Thou-
sands short last spring.



Act quickly to get
APPLE TREES

WILL YOU PLANT THIS FALL? AND AVOID SPRING RUSH

IF WE GIVE YOU 1, 2 or 3 EXTRA TREES

WORTH UP TO **\$4.50**

ABSOLUTELY FREE OF ADDED CHARGE

**PLANT
THIS FALL
Gain
a Year**

Patriotic Americans eager to help produce more food, ordered and planted more fruit trees than in any previous season in history.

Yet thousands upon thousands of fruit trees they ordered were not delivered. Even with Stark's enormous resources, even with Stark's 10 giant nurseries; yes, even this largest nursery in the world, was unable to supply the demand.

Now many thousands of new trees, of virtually every wanted variety, are ready. Trees that we started 2, 3 and 4 years ago, and that by this fall will have obtained the growth and strength so that we can dig them and send them out. We know that, as in other years, many people will procrastinate and wait until Spring to set out fruit trees, but we know too that there are many, many people who, with foresight, will order now for fall delivery and set these trees out this fall after their summer growth so that they will become firmly established through the winter.

We agree with the many prominent horticulturalists who for years have been advocating fall planting in preference to spring planting—except in the far north—and men like Professor Chandler who says: "If fruit trees are planted in the fall, some new root growth will take place before the soil is too cold."

Men like Professor T. J. Talbert of the Missouri State Experiment Station stated:

Growth of Fall-Planted Trees

Yes, Professor Talbert says the average twig growth the first summer, on his fall-planted trees was 74.5 inches while on the spring-planted trees the growth was only 32.7 inches.

We know that some who want to plant fruit trees are thinking mainly of whether or not they can get trees at all. But by sending now it is possible to get not only apples, peaches, pears, apricots and plums, etc., of ordinary varieties, but the finest Record Bearing pure-strain varieties of Stark or Burbank—varieties awarded U. S. patents and trademarks—varieties renowned for coming into bearing 1, 2 or 3 years earlier than non-improved varieties. Others noted for heavy crops doubling the yield of luscious fruits. Others outstanding for the delicious flavor and juiciness of the fruits they produce, and again others so bred and selected that they produce apples

which keep their tempting flavor in storage all through the winter, the spring and into a hot summer—until apples come again.

There is only one way to be sure—absolutely sure—of getting fruit trees of special strains and of choice line in all varieties of Burbank and Stark—this is to order now, while all varieties are still available—and to put your trees in this fall—or order now for Spring Delivery. Otherwise, we cannot guarantee delivery.

In the Fall our field work is easier. We can take more time in selecting your trees. Trees arrive to you only a short time out of the ground. In the Fall the soil is warm and warm ready to receive your trees. You plant them and the soil becomes entirely settled about the roots while the top of the trees are dormant. The tree becomes accustomed to its new setting, new root growth starts almost immediately and continues through the late Fall and early Spring, so that these Fall-planted trees have a big start—so that they often reach a whole year coming into bearing.

All Stark's famous varieties are now available. They are described and illustrated on the page that follows. Every tree you find here is a pure-strain tree propagated and in line from its famous Record-Bearing parents—not a blank sheep, not a runt, not a throwback, not a tree that departs from its famous parent's characteristics.

If you will buy this FALL
WE WILL GIVE YOU FREE
Stark Golden Delicious or Stark King

(Trade-Mark) Queen of Quality Of All Yellow Apples (Trade-Mark) New Improved Double-Red Delicious
You can get absolutely FREE of added cost 1, 2 or 3 Extra Trees—Large size, top quality trees as offered in Coupon below.

Write the Free Trees on your regular ORDER and mark these trees "FREE"
(Check COUPON and attach to order)



**STARK
BRO'S**
NURSERIES AND
ORCHARDS CO.
Louisiana, Mo.

LIKE GIVING A CHILD
THE STRENGTH OF A MAN
EXTRA HEAVY ROOT SYSTEMS
GRAFTED ON STARK TREES

WORTH UP TO \$4.50	FREE TREE Coupon			WORTH UP TO \$4.50
	Worth \$1.50	Worth \$3.00	Worth \$4.50	
	Void after November 1, 1943			
This Coupon pinned to Your FALL Order for Stark Fruit Trees, or other Nursery stock, is good for one additional \$1.50 tree with \$10.00 order, two additional \$1.50 fruit trees with \$20.00 order and three additional \$1.50 trees with a \$30.00 or larger order at current price list prices. (Not over 3 Free Trees to a Customer.)				
\$10.00 order...	<input type="checkbox"/> 1 Tree FREE-	(1 STARKING—Double-Red Delicious Tree or 1 STARK GOLDEN DELICIOUS Tree)		
\$20.00 order...	<input type="checkbox"/> 2 Trees FREE-	(1 STARKING—Double-Red Delicious Tree and 1 STARK GOLDEN DELICIOUS Tree)		
\$30.00 order...	<input type="checkbox"/> 3 Trees FREE-	(1 STARKING—Double-Red Delicious Tree and 2 STARK GOLDEN DELICIOUS Trees)		
Check number of FREE Trees your order entitles you to in varieties mentioned above.				

MONEY IN YOUR POCKET! TREES ON YOUR LAND! AND FRUIT ON YOUR TABLE!

Fruit Growing Revolutionized

by Miracle Varieties of Burbank and Stark

The Lifework of 5 Generations

From—
1816
To—
1943
Over 127 Years Old

How the Stark Family for 127 Years

COMBED THE WORLD FOR IMPROVED FRUIT CREATIONS

Investigated thousands of reports of new fruit varieties

Selected and Bought Amazing Parent Trees

Record-Bearing Strain Parent Trees that produced—Larger Fruit—More Delicious Fruit—that bore years quicker—that bore far heavier

How they nursed these miracle new Record-Bearing parent trees, propagated and multiplied them, nurtured them until their wonder became perpetuated in new and marvelous fruit varieties that will thrive and bear almost anywhere farm crops grow.

Many old-time ideas of fruit growing have been shattered in recent years. Ideas on how long it takes a tree to come into bearing—on size of fruit—on bushels of yield. Truly remarkable improvements in fruit varieties have been made in these years!

Thousands of folks have not yet seen these new and amazing varieties, and so for every one of these miracle fruit trees that we are now able to produce, many ordinary trees are still grown elsewhere. When more people know the difference between ordinary trees and these Stark Record-Bearing Strain Trees propagated direct in line from these famous Record-Bearing parent trees, few will buy the ordinary kind.

For one heavier bearing tree will pay its entire cost with just one of the extra bushels it produces.

One tree that produces larger fruit will pay its entire cost by the added value that larger fruit brings—just one bushel of superior big fruit will often bring double the cost of a tree.

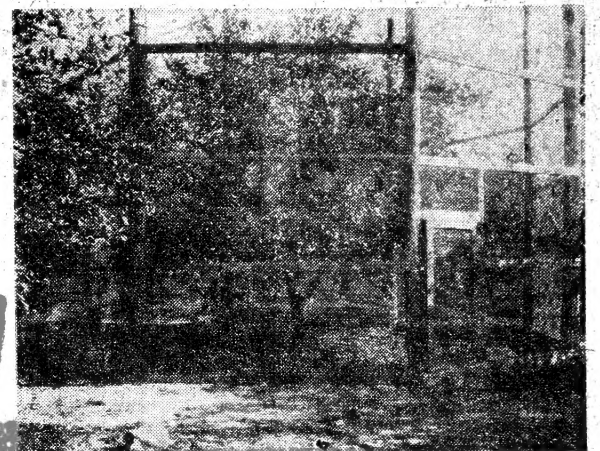
One tree that comes into bearing 2 or 3 years quicker will pay its entire cost by the value of just one of its extra crops.

Isn't it false economy then to accept ordinary trees just to save a few pennies at the start? Better to plant a few less and plant outstanding trees! You may get as much fruit from these fewer trees as from many others. And you can be sure that the fruit you do get will be the finest of its kind.

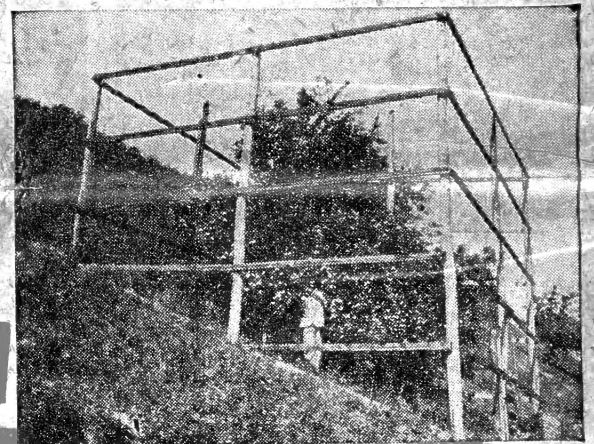


Luther Burbank held the members of Stark Bro's Nurseries & Orchards Company in such high esteem and valued their horticultural work and cooperation so greatly, he requested Stark Bro's to carry on his great work and introduce to the world his new Fruit Creations. We now

offer to mankind Burbank's new and delightfully different Peaches, Plums, Cherries, Fuzzless Peaches, Plumcots as well as new fragrance and beauty in his Roses and Ornamentals. Only Stark Bro's can offer for sale, genuine trees of these marvelous new Luther Burbank creations.



Every Genuine STARKING Apple Tree is a Direct-in-line Descendant of this \$6,000 Original Starking Limb.



Every Genuine Stark Golden Delicious Apple Tree a Direct-in-line Descendant of this Original \$5,000.00 Parent Tree

WE PAID \$6,000 FOR ONE PARENT TREE

We have for years had more fruit trees than anybody else in the world. Yet we paid \$5000.00 to buy the original Stark Golden Delicious Apple Tree—so you might grow the World's Finest Yellow Apple!

We found the amazing Starking Double-Red Delicious Apple growing on only one limb of one tree in a farmer's orchard. We paid him \$6,000.00 for that one limb—so you can now grow it, too!

We paid \$3000.00 for the Burbank Gold Plum. We paid another \$3000.00 for the Burbank Van Deman Quince.

The only way we could buy the wonderful Scarlet Staymared Apple was to pay for the original limb at the rate of \$1000.00 a foot!

Thus we acquired these and other remarkable varieties. Many have been awarded U. S. Patents and Trade-Marks. Is it likely that such varieties as these can be "picked up" anywhere from "curbstone growers" who represent them as "similar to"? No! They cannot! It might take years to find out how different they are. And then precious time would have passed.

To be sure of owning trees that bear 1, 2, or 3 years quicker—bear younger, bear more fruit, bear better fruit—get trees propagated direct-in-line from Stark Record-Bearing Parent Trees. Genuine Record-Bearing Strains sold only by Stark.

Easier now to grow Luscious Flavored New Giant Fruits
than Old Varieties of Ordinary Size . . .

COME FULL BEARING

1 or 2—yes even 3 years

QUICKER

as a result of scientific
selection and propagation



Like giving a child
the strength of a man

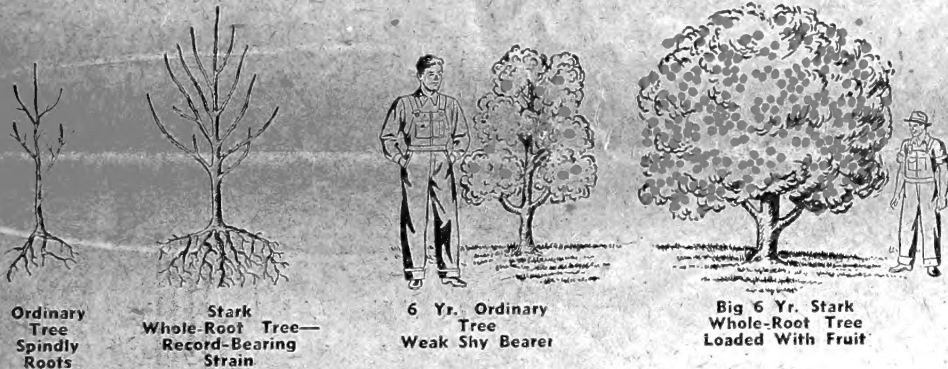
Baby Trees Grafted on Big Heavy Complete Root Systems

work amazingly to shorten the time until you pick fruit—utterly different from ordinary trees propagated with a single piece of root

Which Tree Would You Want?

AT PLANTING TIME

AT 6 YEARS OLD



If you plant a fruit tree that has only a small piece-root, that puny tree, for the next year or two, is fighting for its existence—trying to put out enough roots for survival. Not much strength left for growing and getting ready to bear! No, sir!

But plant a tree with a full, yes, an *extra heavy* root system, and you have ideal conditions for bearing fruit one, two, or sometimes even three years quicker than ordinary trees.

Every Stark Tree—yes, every Stark Tree has an extra heavy whole root system. Experienced fruit growers can almost recognize a Stark Tree by noticing its heavy roots.

This is one of the big reasons why Stark Record-Bearing-Strain Trees are utterly different from ordinary fruit trees.

If we wanted to grow ordinary, puny trees, or second-rate trees, we could ship 3 times the trees we ship today. We even reject thousands of young trees every year that are as good, yes, often better than thousands of ordinary trees placed on the market.

First of all, we won't grow two successive crops of trees on the same acres.

We won't dig our trees out of the ground with a spade. That often injures the roots—cutting them or bruising them in pulling up the tree. To avoid this damage that you might never notice, we have invented a patented power tree-digger. It drives a sharp cutting tool deep below the roots—it cuts the earth, not the tree. It loosens it clean all around—then the tree is lifted gently by power, instead of yanking it out by hand.

After digging, instead of throwing the young trees on the ground to dry out, we place each one in a special, covered truck which protects them from sun and wind. This truck carries them to the cool, darkened grading houses where they are prepared for shipment by wrapping in wet packing and then enclosed in hand-sewn burlap bags or in modern weather-proof cases.

YES, FRUIT ON 2-YEAR-OLD TREES

All this care may seem unnecessary, but it contributes amazingly to making Stark Trees bear younger and live longer. From all sides we get letters telling of fruit on 2 or 3-year-old Stark Trees. Yes, from planters who expected to wait 5, 6, or 7 years, based on their experience with ordinary trees.

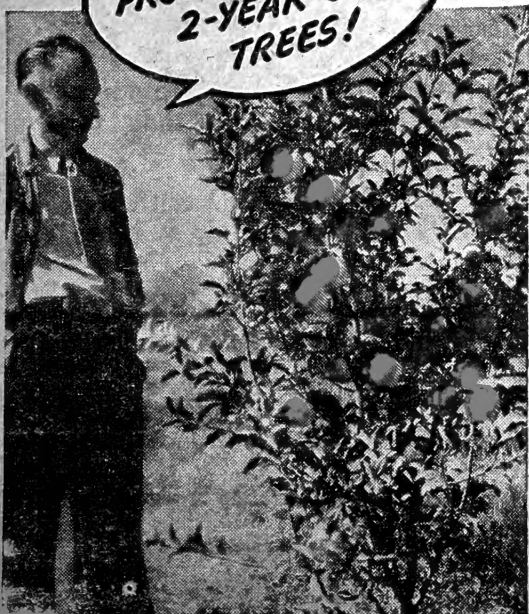
So naturally, if Stark's method of propagating direct-in-line from the original Record-Bearing parent tree will help make your trees bear a year or two sooner—that's what you want.

If Stark's method of grafting on extra heavy whole root systems will help make your trees bear a year or two quicker—that's what you want.

All the extra care that Stark gives—in grafting—in growing—in digging, in protecting the tree from drying out, in subjecting it to 5 rigid inspections—help in giving you sturdier trees that will shorten the time until you pick fruit.

Don't deny yourself these amazing trees that bear the finest fruits grown in America. If you have to plant a few less trees in order to get these better Stark Record-Bearing Strain Trees, do it. Have the finest, and in a few years your trees will pay you back what they cost and pay for many, many more trees, too!

YES, SIR, FRUIT
FROM SOME OF MY
2-YEAR-OLD
TREES!



“Stark Record-Bearing Strain Trees would be cheap even at \$5 compared to those other trees as a gift.”

So declared Mr. Sutton, Owner of a 7,000 Stark Record-Bearing Strain tree orchard in Jasper County, Illinois.

“Last spring I bought 800 trees (NOT Stark Trees) because of a so-called bargain price. I had to throw away 400 cheap trees as worthless. I received the Stark Record-Bearing Strain Trees at the same time, so I planted the best of the “cheap” trees between the Stark Trees. You should see the difference between a Stark

“Record-Bearing Strain” tree and a “cheap” tree of the same age! A Stark Record-Bearing Strain tree only 3 months old is much bigger than a “cheap” tree 15 months old. That's why a Stark Tree would be cheap even at \$5, compared to those others as a gift.”—and remember—Stark Trees cost only a little more than ordinary trees.



FINEST FLAVORED APPLE IN THE WORLD

STARK GOLDEN DELICIOUS

Picked Apples from 2-year Trees in 38 States
"1 Crop from 75 of These Trees Paid for 40 Acres of Land"

Said Garland J. Hopkins, Va.

Once you have feasted your eyes on the rich golden beauty of Stark Golden Delicious—sunk your teeth into its crisp, firm, delicious, juicy, spicy-flavored flesh—once you have enjoyed its sparkling, tangful flavor (reminiscent of a perfectly ripened Bartlett Pear), you, too, will join the vast throng at Home and Abroad who acclaim this apple as "The Finest Flavored Apple in All the World."

Youngest, Heaviest Bearer Known. Medal Winner.
Supreme All-Purpose Apple—Finest to Eat—Best to Cook.

This great, Young-Bearing Stark Golden Delicious Apple brings to mankind a New and Distinctive Fruit Delight—so spry, and yet so free from sharp acid that anyone, even babies and invalids, can eat and enjoy it.

A Large, Glowing, Glorious Yellow Apple that is creating a sensation in the Smallest Back Yard Fruit Gardens and on the great Apple Markets of the World. Adding happiness, health and wealth to all who grow it. In Back Yards, in Home Orchards, in Local Market Orchards and in large Commercial Orchards it is the world's heaviest, youngest bearer—the biggest money maker.

Stark Golden Delicious is the **Best All-Purpose Apple**. For eating fresh it is supreme; for glorious apple pies, baked apples, canned apples (so full of rich fruit sugar it needs almost no additional sugar), exquisite jelly, apple dumplings, apple sauce—it imparts a distinctive flavor which delights the palate and fills the grower's pocketbook.

Stark Golden Delicious is one of the few fruits in the world—and the only golden apple in the past 75 years—to receive the coveted **Wilder Medal—World's Highest Award** in horticulture—awarded after exhaustive investigation proved to "The Supreme Court of Agriculture"—the American Pomological Society—the supreme merit of Stark Golden Delicious.

Stark Golden Delicious Should Be Planted in Every Home, Local Market or Commercial Orchard.

Stark Golden Delicious is unquestionably the most satisfactory American apple. It has everything the grower wants—size (which it extra large); color (a true clear golden); quality (unapproached by any other apple); Keeping (keeps till apples come again). It's sugar content is one of the highest of any known apple—needs little for canning or cooking.

The tree is the most perfect orchard tree we have ever known. It is the World's youngest bearer of all apples. It bears practically every year and it bears tremendous crops. It is a late bloomer, often has 3 different sets of bloom. It is virtually blight proof.

Stark Golden Delicious is the kind of an apple that every man wants. He wants a large apple, a good apple and plenty of them. Stark Golden Delicious gives him all this.

Quoting the words of the great horticultural authority, Benjamin Wallace Douglas, "if you have room for only one tree, make it Stark Golden Delicious."

Stark Bro's Discovered, Introduced and Bought Exclusive Propagation Rights—and the Original Stark Golden Delicious Tree for \$5,000.00

Although your Genuine Stark Golden Delicious Apple Trees cost you only a few cents more than ordinary trees, we spent \$5,000 that you might grow these amazing Stark Golden Delicious Apples—for the enjoyment and health of your own family and for profit.

BEWARE of Bogus Trees and Imitations Offered under Similar Names — Genuine Stark Golden Delicious Trees are Sold ONLY by Stark Bro's, Louisiana, Mo.

Genuine
Stark
Golden
Delicious

ACTUAL
SIZE

All America Praises This YOUNG-BEARING Marvel.

Read the Amazingly Enthusiastic reports of people who paid only a few cents more to get these "Record-Bearing" trees that pay for themselves by bearing large, luscious fruit 2 or 3 years quicker than ordinary trees.

READ WHAT THESE PEOPLE SAY

✓ Bears Younger Than Any Other Good Apple

"Stark Golden Delicious commenced bearing at 2 years—at 4 years averaged a bushel per tree."—*M. E. Wagner, Michigan.*

"Began bearing 2nd year. Have borne regularly ever since."—*A. W. A. Bartlett, Canada.*

✓ Bears More Bushels of Fruit Yearly

"Only kind bearing full crop—many 9 bushels."—*T. E. Bartlett, Mo.*

"Picked 198 bushels from 20 trees only 10 years old. One had 21 bushels; one 19; another 21."—*J. W. Hanes, Ohio.*

✓ Bears Every Year—Never Fails

"Loaded last 2 years and carrying more than ever this year in spite of hard freezes when blossoms were open."—*D. H. Brake, Mich.*

"Have full crop with other varieties failures."—*Preston T. Roberts, N. J.*

✓ Makes Far Greater Profits—Bears When Others Fail

"We sold out at 3 times what others brought."—*John C. Thompson, Tenn.*

"We get 50c a bushel more than for others. Trees bear young."—*Boyd Richards, Va.*

"12 bushels from 9-year old tree when late freeze got all other varieties. Stark Golden Delicious produced 665 bushels—other varieties nothing."—*Edward E. Heid, Ind.*

✓ Brings Double Prices Coast to Coast

"Stark Golden Delicious brings about double the price of other varieties. Customers say it is best apple of all."—*Wm. R. Houk, Ind.*

"Stark Golden Delicious brings 2 to 3 times the price of others."—*E. L. Morris, Tenn.*

✓ Keeps Crisp and Juicy All Winter—Till Late Spring

"Good keeper and the best selling apple."—*Gert Wetzel, Mich.*

"Keeps well and has flavor of delicious pear."—*J. F. Atterbery, Mass.*

"Demand getting stronger all the time. Selling higher than others."—*Stilwell Storage Co., Mo.*

✓ Tree Grows and Bears Huge Crops Everywhere

"6 year old bearing—some trees 6 bushels. Best for Georgia."—*M. W. Hall, Georgia.*

"My 30 Stark Golden Delicious trees, 7 years old, average 5 bu.—branches weighted to ground."—*J. R. Davidson, Wisconsin.*

✓ The World's Best All-Purpose Apple

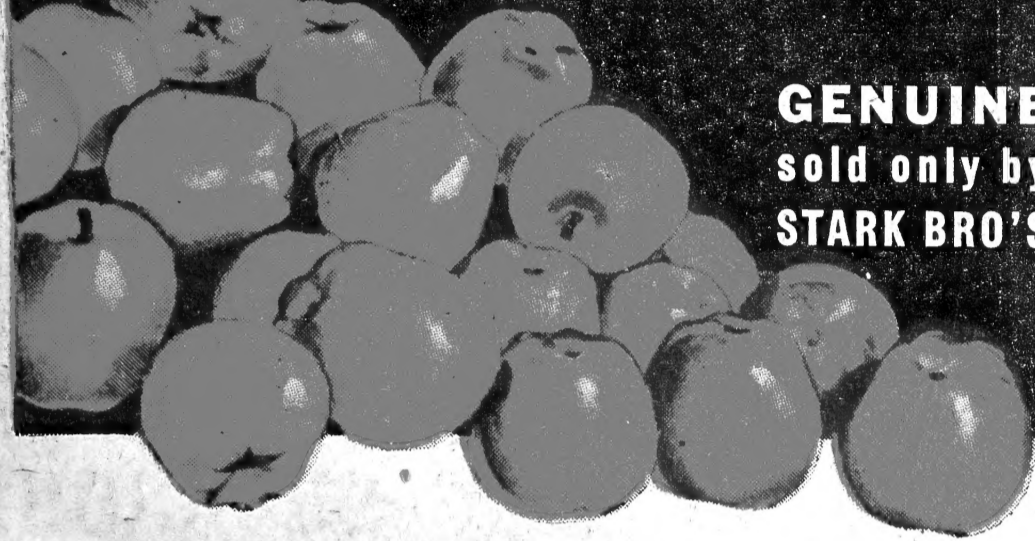
"Ideal not only for eating, but also for cooking purposes."—*Geo. E. Marsh, Missouri.*

"For Baking—holds its bright color! For Apple Dumplings! Sliced in Cream and Sugar! Glorious for Apple Pies! Unequaled for Apple Sauce! World's Best Eating Apple! Retains fresh cream color in Salads!"



NEW creation of horticultural wizardry BEARS MORE BUSHELS BEARS YOUNGER

GENUINE
sold only by
STARK BRO'S



STARKING — the new (TRADE-MARK) DOUBLE-RED DELICIOUS.

\$6,000.00 was paid for a single limb!

Here is the great new apple that a few short years ago electrified the horticultural world. A marvelously flavored new apple suddenly produced by a miracle of Mother Nature to transcend in all its virtues what was at that time the world's outstanding apple, the Stark Delicious.

That new apple is the STARKING (Double-Red Delicious).

—But this astounding STARKING (Double-Red Delicious) while retaining exactly the same superb flavor and quality as Delicious, has improvements that make it the most remarkable red apple of the age. The size is the same as Delicious—but the color is a deep flashing red all-over from the base of the stem to the blossom end. It has the greatly-to-be-desired habit of taking on this glowing crimson red color two or three weeks before Delicious starts to color. Because all-red Starking apples can be picked while still hard-ripe, they keep crisp and juicy till late spring—do not get mealy!

STARKING (Double-Red Delicious) sets a remarkable price record on the markets—bringing 50c to \$1.00 a bushel more. As soon as this variety began to appear on the markets, the demand for Starking (Double-Red Delicious) apples and apple trees simply swept the country.

America's Supreme Red Eating Apple! Delicious flavor, crisp, juicy. Extra large size. Strong waxy skin. Fine shipper and keeper. Strong growing, long-lived, healthy, hardy tree. Younger-bearing. Heavier crops. All combine to make Starking "America's Greatest Red Apple."

It was on a limb of a genuine Stark Delicious tree that an observing orchardist discovered this new "freak" bud-sport limb which gave to the world its finest red apple. Scientists from Coast to Coast traveled thousands of miles to examine this phenomenon of nature—this limb of superior red apples. They unanimously pronounced it a true Bud-Sport and declared that it would open a complete new era in apple growing.

Then Stark Bro's Bought This New Bud-Sport Limb
for the All-Time Record Price of \$6,000.00

This new mystery apple is creating unheard-of excitement in the apple world, for it gives the apple growers just what they want. The apple-eating public is demanding and paying highest market prices for Starking—Mother Nature's greatest achievement in red apples.

Starking (Double-Red Delicious) is the brilliant red apple that is now the cornerstone of all fruit tree plantings—the one red apple of which you will want to plant the largest number of trees—the one which

will bring you the most complete and unending satisfaction in your Back Yard, Fruit Garden, Local Market or Commercial Orchard. No yard or orchard is complete without it.

Of Starking (Double-Red Delicious) Luther Burbank said, "Simply cannot be compared with any other apple—a rich, refreshing juiciness not found in any other apple—a gem, the finest flavored red apple in all the world."

READ WHAT THESE PEOPLE SAY

✓ **Starking Trees Bear Years Younger — 100% Red — Very Large.**

"My Starking trees bear loads without breaking. Come into bearing when 4 years old. Fruit has 100% color.—A. S. Phlegar, Va.

"My Starking bearing at 2 years of age. At picking time fruit is 100% red and very large. Everyone marvels at its beauty.—T. S. Wiley Ore.

"My Starking bore much younger than Delicious. My customers are just crazy about them. Have sold at \$3.50 a bushel.—Geo. T. Skiff, N. Y.

✓ **Thrive Everywhere — Hardy in North — Succeeds in South.**

"Last year we had a very severe winter, but there was no winter injury on my young Starking trees, while thousands of Baldwins were absolutely killed. All my Starking trees bore fine crops this year.—K. Y. Taylor, Franklin Co., Mass.

"Despite the drouth, many of my young Starking trees bore 6 bushels each this year. Fine, Extra Fancy, No. 1 Apples, following 20 below zero winter.—D. Gold Miller, Berkeley Co., W. Va.

✓ **Bear Heavy Loads of Fruit and Stand Drouth Splendidly.**

"Starking is a young and heavy annual bearer. The fruit brings 50% more than Delicious.—F. C. Sison, Ohio.

"My Starking trees began bearing younger than Delicious. All of them withstood the terrible drouth splendidly and bore good crops.—C. McCurdy, Mich.

"I gathered 100 bushels extra fine Starking even though the drouth was the worst in history.—Chas. W. Hamilton, Taylor Co., Iowa.

✓ **Astonishing Keeper! Keeps Crisp and Juicy Until Late Spring.**

"The increased color of Starking makes it possible to pick the fruit earlier and make the apple keep longer.—Prof. Potter, N. H. State Horticulturist.

"The keeping quality of Starking is astonishing. I have held them up to June of the next year after picking and they were still firm, crisp and juicy.—P. Weisbrod, Iowa.

"Starking Apples after 15 months in storage were still very firm and juicy.—Prof. T. J. Talbert, Mo. State Horticulturist.

✓ **Large in Size — Perfect in Shape — Fine Flavor — Higher Color.**

"I would rather plant Starking than any other red apple because Starking apples are larger, finer flavored, higher colored fruit. My Starking trees bore 2 years younger than Delicious.—Harry Roberts, Madison Co., Tenn.

"People in this vicinity were startled at the size and quality of my Starking and Golden Delicious. They didn't know that apples like these could be grown in Kentucky.—Jos. Waggener, Webster Co., Ky.

✓ **Most Popular Variety — Extra Color Brings Bigger Prices.**

"Starking — our most popular variety — brings us higher prices and makes us more money than any other.—Dr. J. C. Lowry, N. C.

"The all-over-red Starking color makes them bring 33% to 50% more than Delicious year after year.—Frank Penstone, Ill.

"All my Starking sell quickly for \$1.00 more per bushel than Delicious, due to better color and finer flavor.—Mrs. E. L. Bower, Richardson Co., Nebr.

WARNING—Genuine STARKING trees are sold only by Stark Bro's, Louisiana, Mo.

STAR
FEATURES
OF STARK
TREES

Another Stark
EXTRA
VALUE

Stark's Special Whole-Root Grafting Method produces hardy trees with big, strong root systems that draw from the soil an abundance of the vital substances necessary to rapid, sturdy growth and young and heavy bearing. When you get Stark Trees you get strong whole root trees.

STARK NURSERIES — Oldest in America—Largest in the World LOUISIANA, MO.

See Big FREE TREE Offer on Page One



2 NEW U. S. PATENT APPLES

favorite varieties Amazingly improved

GET FULL RED WEEKS SOONER

Pick Hard-ripe—Avoid drops

GENUINE
sold only by
STARK BRO'S

Grow your own! Market your surplus at top prices. Because supreme deep red color appears earlier, they can be picked when hard ripe. Result, they keep longer.

SCARLET STAYMARED

STARK'S new SCARLET STAYMARED

(U. S. PATENT)

MIRACLE OF HORTICULTURE CHANGES STRIPED STAYMAN TO SCARLET STAYMARED—A FLAMING SOLID RED

A miracle of horticulture—A True Bud-Sport of Stayman Winesap—an apple that glows with scarlet red, bursts with juice, grows to almost giant size.

All the Superior traits that made Stayman Winesap a National favorite and Solid, blazing, Fiery Red Color too!

Scarlet Staymared—like Stayman Winesap—is a large apple. Juicy, Spicy, Wine-like Flavor. Delicious. Keeps crisp and juicy till apples come again. It can be picked when hard-ripe and yet have the advantage of full, solid, blazing, fiery-red color.

Tree is hardy. Starts to bear sooner than Stayman Winesap. In Home Yards, Local Market and Commercial Orchards, this new improved Stayman—Scarlet Staymared—is adding extra profits to delighted growers.

\$1,000 a Foot for Original Limb

Scarlet Staymared Apple Trees cost you only a few cents more than ordinary trees. Yet, we paid \$3,500.00—nearly \$1,000.00 a foot—for the original Bud-Sport Limb of this amazing new and improved apple.

For eating fresh, for canning, for pies, cobblers, apple butter, jellies and jams, Scarlet Stay-

mared is ideal. It is an excellent keeper and can be stored for use till apples come again.

Scarlet Staymared is much better than regular Stayman Winesap, and so entirely new and different that it is protected by a U. S. Patent. Trees can be obtained ONLY from Stark Nurseries, Louisiana, Mo.



NEW JONARED

STARK'S new JONARED

(U. S. PATENT)

Amazing Jonathan Sport Colors Quicker, Keeps Longer

Glamorous brilliant red beauty has been added to the glorious Jonathan.

Bright, solid, fiery red color of new JON-A-RED wins the eye-appeal. This amazing extra color comes on early in the season. You jump into the Jonathan market and pick off the top prices. Ten days to two weeks before regular Jonathan has enough color to pick. This also avoids the "Jonathan Drop."

Jon-A-Red is a true young-bearing Jonathan in all respects with the addition of this bright, solid, fiery red color. Same spicy, rich acidity that has made Jonathan a prime favorite with lovers of brisk-sub-acid apples. Juicy. A good apple for eating fresh and for pies, sauce and dumplings. Keeps crisp and juicy much longer than old Jonathan. A favorite for the Home Yard, Local Market and Commercial Orchard.

These added qualities make Jon-A-Red much better than Jonathan. Also Jon-A-Red Trees enjoy the protection of a U. S. Plant Patent, and trees can be obtained ONLY from Stark Bro's Nurseries & Orchards Co., Louisiana, Mo.

BOTH REDDEN 2 WEEKS TO ONE MONTH SOONER

Beware of Imitations
GENUINE
Trees Are Sold ONLY by
Stark Bro's, Louisiana, Mo.

STAR
FEATURES
OF STARK
TREES

Another
STARK
EXTRA
VALUE

Over 127 years experience—6 generations of the Stark family—goes into every tree we sell. Since 1816 when Stark Nurseries was founded, vast funds of experience in fruit and fruit-tree growing have been accumulated and are used for the benefit of Stark Customers.

READ WHAT THESE PEOPLE SAY

✓ **Scarlet Staymared bears young—
"Picked Apples from 2-Year-Old Tree"**

"2 years ago this Spring I planted 100 of your Scarlet Staymared trees. This year (when only 2 years old) I picked 32 nice all-over-red apples from one of them. It looked so good I thought I would get a picture of it, so I am enclosing two exposures."—*J. S. Webster, Franklin County, Va.*

✓ **Scarlet Staymared is big and beautiful—
"Put Catalog Pictures to Shame"**

"Apples are wonderful. I picked over a bushel from 4-year-old trees. These apples would put your catalog pictures to shame."—*Alfred Tracey, Ohio.*

✓ **Scarlet Staymared planted only one year—
"Chuck Full of Bloom Following Spring"**

"The lot of trees I planted one year ago had quite a surprise for me this Spring. Chuck full of bloom. Surely will be a good bearer."—*Hans Kisbaum, Iowa.*

✓ **Scarlet Staymared enormously productive—
"Average 9 Bushels to 6-Year Tree"**

An average of 9 bushels per 6-year tree is the amazing crop reported by Rising Springs Orchards of Pike Co., Ill. "We picked them twice and color was good enough on all of them for U. S. Fancy. Size of the apples ran 2½ inches and larger. Some trees bore 14 to 15 bushels per tree. A beautiful crop."

✓ **"I'm Certainly Glad I Planted Jon-A-
Red." That Flashy Finish Does the Job."**

"I certainly am glad I took your suggestion and planted Jon-A-Red instead of Jonathan. Your Jon-A-Red came into light bearing for me the third year. Now 6 years old, they average from 5 to 6 bushels per tree. Beautiful all-over flashy red fruit which sold for 35c to 40c more than the same grade Jonathan.

"These Jon-A-Red color up away ahead of the Jonathans. Neither I nor any of my friends who grew Jonathans have been able to get good color until you people sold us Jon-A-Reds. That flashy finish certainly does the job."—*Les Smith, ex-president, Ill. Hort. Society.*

✓ **"If you do nothing more for Michigan
Growers you have given them the
Jon-A-Red Apple."**

"Wherever I happened to be in Michigan," reports Stickney Stark, "Jon-A-Red seems to be entirely replacing Jonathan because of its extra fine flavor, all-over-red color and the extra profits it brings."

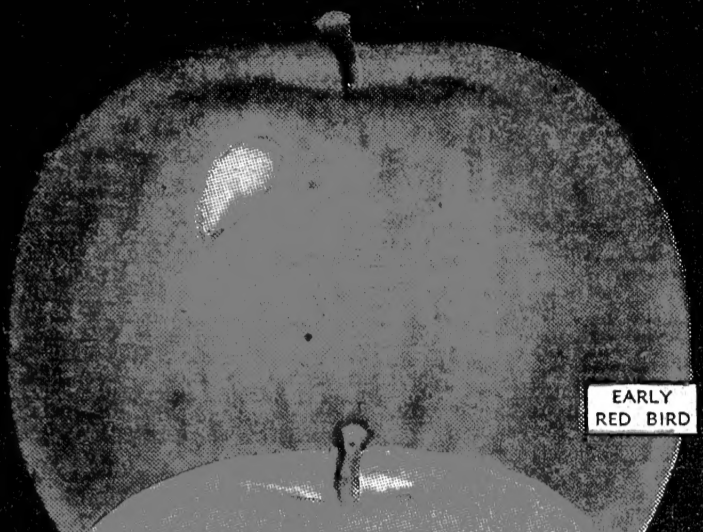
Ward Lockwood told me: "If Stark Bro's don't do anything else for the Michigan growers, they gave them the Jon-A-Red apple."



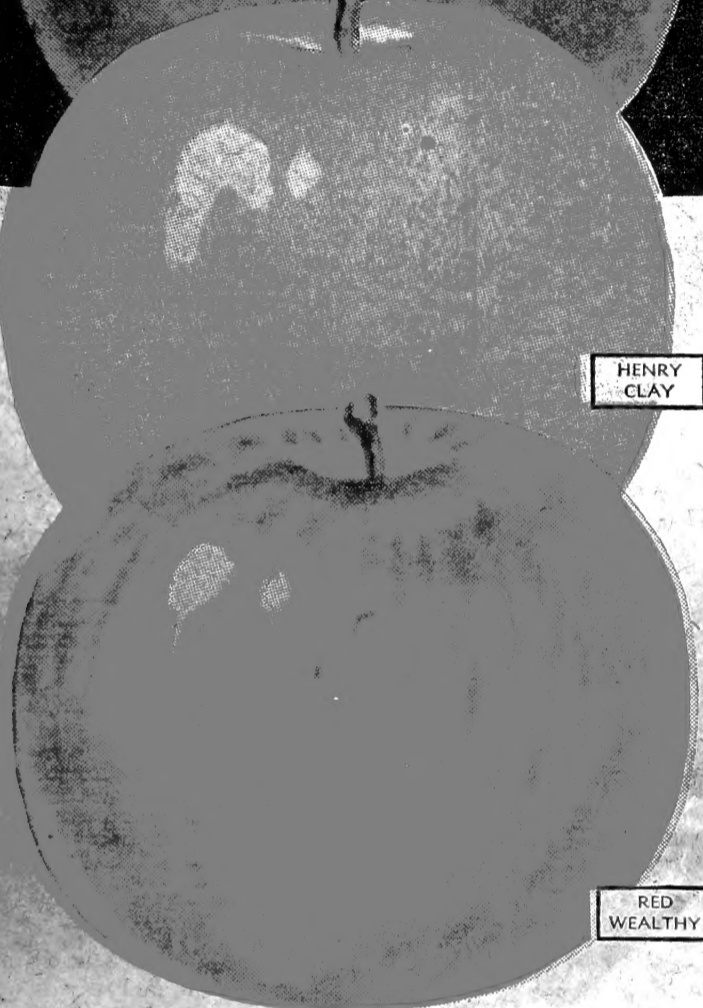
APPLES THE YEAR AROUND

Exclusive new improved Stark strains

that bear quicker,
bear more fruit
or better fruit.



EARLY
RED BIRD



HENRY
CLAY

RED
WEALTHY

RED
MCINTOSH

Double-Life
Grimes Golden

RED ROME
BEAUTY

Almost Every Year Mother Nature Improves Some Old Favorite Variety of Apple—Often in a Miraculous Development of Color, Size, Flavor, Bigger Crops, Hardiness or Quicker Bearing. Stark Experts Search the Country to Seek Out Variety Improvements That May be Perpetuated by Careful Selection and Propagation.

Here are the varieties you've known or heard of for years, many of them vastly improved by nature; by selection of Record-Bearing parents; by the Burbank-Stark method of extra-heavy root system development; plus the remarkable Stark method of "fattening" the trees in specially selected soils before digging to give them a vigorous head start.

Plant a Succession of Varieties ripening from Early to Late—for Year-Round Home Use—eating, canning, drying, storing—and Big Profits from Continuous Roadside and Local Sales.

WINTER APPLES

SELECTED FOR YOU AS THE BEST OF OVER 5,000 KNOWN VARIETIES

For Stark Golden Delicious, Starking, Scarlet Staymared and Jonared, see pages 4, 5 and 6.

EARLY APPLES SUMMER APPLES FALL APPLES

All Apples on this page are
Listed in their Order of Ripening.

● **EARLY RED BIRD—World's Earliest Apple.** First apple of the season. Early Red Bird ripens when the family is hungry for tart apples to eat and for fresh apple pies, dumplings and sauce. Our early apple leader.

A large and beautiful bright strawberry red apple. Should be in every Home Yard, Local Market and Commercial Orchard. Extremely hardy. Bears tremendous crops at early age.

● **HENRY CLAY—Earliest Yellow Apple.** Large yellow apple. Excellent quality—best very early eating apple. Ripens just after Early Red Bird—earlier than Transparent. Should be planted with Red Birds in Home Yard, Local Market and Commercial Orchards.

These two apples fill demand for early summer apples which are good to eat and to cook. Tree hardy. Strong grower. Blight resistant. Bears heavy crops. Introduced and sold by Stark Nurseries.

● **YELLOW TRANSPARENT—An Old-Time Favorite.** Ripens just after Henry Clay. Large, Crisp Yellow Apple. Good cooker. Sub-acid flavor. Tree very hardy. Henry Clay is superior.

● **LODI (Early Golden) New, Improved Yellow Transparent.** Fruit large. Clear yellow. Oblong conic shape. Ripens few days after Transparent. Tree hardy. Often bears at 2 or 3 years. Has great promise. Good for eating and cooking—home yard and market.

● **DUCHESS—Double-Red—New, Improved Duchess.** Combines all the well-known qualities of Duchess with brilliant red color. Fruit good size; flavor of rich acidity. Peerless cooking apple. Tree dwarfish. Early bearer. Ideal for filler and for yards, where space is limited.

● **WILSON RED JUNE—Extra Young-Bearing Tree.** Brilliant, glorious deep red Summer apple of enormous size. No other Summer apple can compare with it in size and beauty. A favorite in Home, Local and Commercial Orchards. Ships well. Commands high prices on the market. Introduced by Stark.

● **STARK SUMMER CHAMPION—Best Late Summer Apple.** Young bearer. Most delicious flavor of all Summer apples. Fruit big, handsome. Brilliant Red. Best keeper and shipper of Summer apples. Favorite of its season in Home Yards, Local Market and Commercial Orchards. Introduced and genuine sold only by Stark Bro's.

● **WEALTHY—Double-Red Strain. Genuine Sold ONLY by Stark.** Best Fall apple. Often bears on 2-year trees. Fruit is beautiful, brilliant, flashing red. Size medium to large. Superb quality. Juicy, with refreshing wine-like flavor. Should be in every Home Yard, Local Market and Commercial Orchard. Fine for drying.

● **MCINTOSH RED—Our Improved Strain Bears Younger.** A striking beauty, with a flashing, all-over red color. Its luscious perfume-like flavor whets the appetite of the entire family. Its almost snow-white flesh is crisp and delicate.

Our Double-Red Strain is rich with all the good qualities which have made McIntosh a favorite for the home, on the markets and with growers. Ripens in early winter.

Tree is long lived and extremely hardy. A strong spreading grower. Ideal for Home Yards, Local Markets and Commercial Orchards in all sections. Especially fine for Northern states.

McIntosh Red Trees—genuine Stark Strain, can be obtained *only* from Stark Nurseries, Louisiana, Mo.

● **GRIMES GOLDEN—"Double-Life" (Trade Mark).** For more than 50 years Grimes Golden has been famous for its rich, spicy flavor. It is medium large in size. Beautiful golden yellow color. Ripens in early winter. Ideal for holiday trade. Possesses an alluring flavor.

Tree is moderate spreading grower. Ordinarily, Grimes Golden trees are short lived because it is subject to collar rot. Stark "Double-Life" Process Grimes Golden trees resist collar rot. This Process doubles the life of the tree and more than doubles the profits to growers.

Delicious for eating fresh. Good for pies, sauce, dumplings, cider, for canning and drying.

Grimes Golden "Double-Life" trees are trade-marked, propagated, and can be obtained *only* from Stark Nurseries.

● **JONATHAN—Stark Young-Bearing Strain. When 2 years old, the parent tree bore 1/4 bushel of perfect bright red apples.** It's rich, spicy, sub-acid flavor has made it a national favorite. For years Jonathan has been a great home orchard favorite and a great money-maker for commercial growers. Our young-bearing strain has corrected its greatest fault—much more valuable than the old Jonathan. Jon-A-Red (Solid Red Jonathan) should be planted if all-over red color is wanted.

Tree is extremely long-lived and healthy. It is widely adapted and largely grown throughout the Northwest, Central West and East—everywhere except the Far North. It is one of the most profitable apples in the great Mississippi Valley Section.

One of the best apples for Home Orchards, Local Market and Commercial Orchards.

Jonathan—Stark Young-Bearing Strain trees are obtainable *only* from Stark Nurseries.

● **STARK KING DAVID—Trade-Mark.** Youngest, heaviest bearer, except Golden Delicious. Healthy. Blooms late. Bore all over the United States when all old stand-by varieties were killed by frost.

Flesh is beautiful rich cream color. Full of spicy, wine-like juice. Good for eating. Excellent for cooking and cider. Hangs weeks after Jonathan.

An apple which has made good all over America, in Home Orchards, Local Market and Commercial Orchards. Introduced and sold *only* by Stark Bro's.

● **CORTLAND—A Late-Ripening McIntosh Cross.** Has many of the qualities which has made McIntosh a favorite. It is being planted in all McIntosh sections—and the markets take them at good prices. Fruit is large, dark red and firm. Flavor very similar to McIntosh. Larger, firmer, ripens later, hangs better and keeps longer than McIntosh.

● **STARK DELICIOUS (Trade-Mark).** World's Most Popular Apple until our STARKING "Double-Red" Delicious was discovered. This great big, flashing, late winter, red apple revolutionized the entire apple industry. Flavor so rich and flavorful that C. M. Stark exclaimed "Delicious" when he first discovered and tasted this new world-famous apple.

● **ROME BEAUTY (Double-Red) Superior Baking Apple.** Has all the good qualities of the popular Rome Beauty plus a brilliant dark red color which adds tremendously to its value. One of the latest to bloom.

Genuine Stark Double-Red Rome Beauty trees can be obtained *only* from Stark Nurseries.

● **YORK-A-RED (Double-Red York) U. S. Patent.** Best brilliant all-over red York. Popular for home and Commercial Orchards. Identical with the old money-making favorite (York Imperial) with the addition of solid flashing red color which assures growers higher prices and practically no scald. Genuine York-A-Red Trees are U. S. Patented and obtainable *only* from Stark.

● **BLACK BEN (Trade-Mark) The "Barrel Filler."** A big improvement over Ben Davis and Gano. Marvelously beautiful. Glowing deep solid blood red. Snow-white flesh. Keeps perfectly in cellar and in storage. No scald. Bears young. Ideal for baking and home use. Because of its big crops of huge-sized apples, it has won the name of "Barrel Filler." Introduced by Stark Bro's.

● **NORTHERN SPY (Double-Red).** A popular apple in the cold New England and far Northern States. Double-Red Northern Spy is identical with Northern Spy with the addition of deep glowing red color which brings better prices. Crisp. Firm. Juicy. Stores well.

● **STAYMAN WINESAP.** One of the greatest Commercial Apples. A huge red apple distinctly striped with carmine. Flesh is juicy and crisp with a mild and pleasing acidity. Flavor has made it a general favorite.

Tree resembles old Winesap, stronger grower and hardier. Scarlet Staymared is replacing it.

● **PARAGON WINESAP (Improved Mammoth Black Twig).** A huge apple—larger than either Winesap or Mammoth Black Twig. Bright clear solid red color with firm, rich, creamy yellow flesh.

● **WINESAP (Improved Virginia Stark Strain is the finest of Winesaps).** A rich wine-flavored, late keeping favorite. Always popular in Virginia and being planted everywhere. A beautiful, dark red apple.

OTHER VARIETIES—See Price List—Page 14.

STARK CRAB APPLES

VIRGINIA. Hardy. "Red—fine for cider, jelly, pickles and preserves"—juicy, good to eat raw.

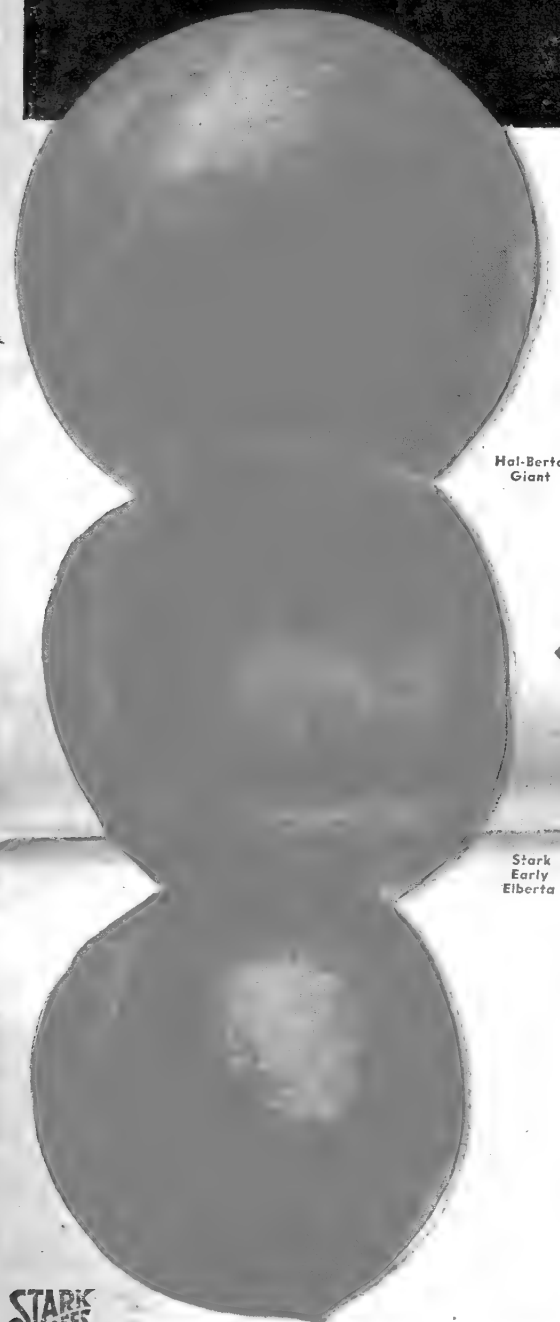
STARK FLORENCE. Most beautiful bloom, a most prolific and most valuable crab. Fruit bright red. Fine jelly, sauce, preserves. Dwarf trees. Hardy.

STARK GOLD. Sold *only* by Stark Bro's. Pure Golden crab. Makes exquisite jelly, pickles, preserves.

DOLGO. Beautiful bloom, new red crab. For pickles, jelly. Young, heavy bearer. Hardy. Dwarf.

NEWEST AND GREATEST CREATIONS IN PEACHES

Grow to undreamed of size, color, flavor—luscious juiciness



← HAL-BERTA GIANT

World's Largest Peach—U. S. Patent

Here's a Peach so amazing that we bought it for the highest price ever paid for a Peach and it was honored with the First U. S. Patent ever issued to a fruit tree. **A PERFECT FREESTONE.**

Hal-Berta Giant is a huge, beautiful red on gold peach—many peaches weigh a pound each. Perfect freestone. Almost fuzzless. Deliciously flavored. Firm, solid, luscious golden yellow flesh. A small pit. Ripens Mid-Season—usually 4 days to a week or 10 days after J. H. Hale and Elberta.

Has all the delicious flavor and melting firm flesh of J. H. Hale. Larger than Hale and bears heavier. Hardy. Fine shipper. Young bearer.

"2-year-old trees bore 1 1/2 bushels. Most beautiful peaches I ever saw."—R. C. Perry, Wash.

"Finest Peach in East! Size, color and flavor unexcelled. Trees stand more severe weather than any other."—Norman C. Brown, Penn.

"I was offered 25c a piece for Hal-Bertas, 3-year-old tree bore big crop. Averaged about a pound each."—Jess Henson, Okla.

"Hal-Berta Giant is very hardy—it bears even when other varieties fail. My Hal-Berta Giants and J. H. Hales bring highest prices—with Hal-Berta Giant bringing 25% more than Hale."—R. Y. Scott.

"Biggest Peach I have ever seen. Planting more this season."—J. H. McIlhatton, Ga. Agri. College.

Hal-Berta Giant

← STARK EARLY ELBERTA

The One Peach Chosen as BEST from 4 Million Trees Sent Out for Testing

World's Finest Canning Freestone

Stark Early Elberta—Genuine Summer Gleason (Trade-Mark) Strain—is a beautiful, large, golden yellow peach, blending into a glorious red on sunny side. Luscious, fine-grained golden yellow flesh is flavored with juice as sweet as nectar, clear to the pit. A Freestone. Ripe 10 days before Elberta.

Stark Early Elberta allures with its beauty, gratifies with its quality and sells for top market prices everywhere.

It is today the best known, best flavored and best liked peach of the nation. World's finest canning freestone. It should be in every Home Yard, Local Market and Commercial Orchard. Beware of Bogus Imitation Early Elbertas. Genuine Summer Gleason strain sold ONLY by Stark.

"Stark Early Elberta is one of the handsomest, most shapely and beautifully colored of peaches. The quality fully carries out its appearance. A model peach. Congratulations!"—Luther Burbank.

Stark Early Elberta

ELBERTA "Queen"

(TRADE-MARK)

Stark's Large Queen Strain is Larger, Rounder and Often Brings 50c to 75c a Bushel More Than Ordinary Strains of Elberta.

Mid-Season Yellow Freestone. Best known American Peach—the Standard by which all others are judged.

Elberta will always be in demand on all markets. An excellent commercial peach. Good for canning, drying, and shipping—when full ripened on tree, delicious to eat. Every Home and Commercial Orchard should have our Large Queen Strain—sold ONLY by Stark Nurseries.

WORLD'S EARLIEST — Earliest Known Peach — NEW

(TRADE-MARK)

EXTREMELY HARDY—EXCEPTIONALLY YOUNG, HEAVY BEARER

World's Earliest is a Sensational Young Bearer new peach that every home yard and commercial grower will want to try.

It is the Earliest Ripening Peach known—10 days ahead of its famous early-ripening parent, Red Bird. Early. In addition to holding the World's Record for earliness, World's Earliest also won the "Hardiness Championship" in our Test Orchards last winter. Last January it dropped to 17° below zero and again in February it dropped down to 14° below. Yet, World's Earliest came through with the best crop in our Peach Test Orchard, which includes all leading varieties.

Beautiful bright red skin. Firm, juicy, creamy flesh. Better flavor than Red Bird. Late heavy bloomer. Excellent shipper. Extremely hardy, both in tree and bud—bears even where most varieties fail. Medium size. Clingstone.

World's Earliest comes on the market first, when the public is fruit hungry and anxious to buy peaches at top prices. Good quality for such an extremely early peach.

World's Earliest trees are sold ONLY by Stark Nurseries, Louisiana, Mo.

QUICK-BEARING Peach Trees

Pick Peaches in 2 or 3 years—

from YOUR OWN Stark-Burbank Trees

Plant Peaches to get the youngest bearing of all fruit trees. Many 2-year trees of Stark young bearing strains produce glorious fruit, and at 3 years bear good crops.

These quick-bearing hardier peaches—delicious to eat and fine for home canning—should be in every Home Yard, Garden and Market Orchard, for quick profits.

RED BIRD CLING, Early

Most Popular Very Early Market Peach

Bright glowing color—"red as fire"—on a background of creamy white.

Handsome. Large—as large as Elberta. Ripens about 45 days before Elberta. Good to eat and fine for pies, cobbler and peach pickles. Quality good, especially when left on the tree until they get fully ripe.

"Break all young-bearing records." *"Break all bearing records."* *"One Crop paid for my whole orchard."* *"Most profitable early peach."* *"Sell fast as can ship."* *"Better shipper than Elberta."*

Genuine Record-Bearing Strain Red Bird Trees obtainable ONLY from Stark Nurseries.

JUNE ELBERTA

Earliest Yellow Semi-Freestone

The earliest ripening peach of the Elberta type.

"Picked 1/2 bushel to 3 pecks from my 2-year-old June Elberta tree. By far the best early peach I ever saw."—Wm. H. Welch, Mo.

Rich golden yellow flesh. Ripens just after Red Bird Cling—about 40 days before Elberta. Its beautiful color, large size and good shipping quality, make it one of the big profit-making peaches.

ALTON

Best Early White Freestone

A magnificent peach! Large, white fleshed. Freestone, sometimes semi free. Young and heavy bearer. One of the sweetest and most delicious of peaches. Ideal for eating fresh and for canning. Tree extremely hardy and vigorous—bears crops when many others fail.

GOLDEN JUBILEE

One of the Earliest Yellow Freestones

A large very early true Freestone of Elberta type. Very profitable for home and local markets. Ripe about 25 days before Elberta.

Fruit is clear bright deep yellow. Large. Oblong shape. Delicious flavor with no bitterness at pit. Ships better than most early peaches. Golden Jubilee fills the demand for a beautiful, large, high quality yellow freestone which ripens very early. Ripe when it has almost no competition. Brings highest prices.

Developed by New Jersey Exp. Station. Fruit growers declare: *"One of the most desirable yellow fleshed freestones of its season."*

REDHAVEN—New

Earliest Yellow Fleshed Freestone—Ripe a Month Before Elberta

This deliciously flavored new peach has everything—high quality, a true perfect freestone. Brilliant red color. Flesh firm, fine textured. Excellent quality. A redder, earlier Halehaven type.

Trees are vigorous. Heavy bearers. Should be in every Home Yard and Commercial Orchard to start the quality yellow peach season. Tough skin, should make it good shipper. Ideal for eating, canning, drying. Recommended and bred by Mich. Exp. Station. Ripe 30 days before Elberta.

GOLDEN ELBERTA CLING

World's Finest Canning Peach

Most beautiful Yellow Clingstone Peach. Ripens 5 days before Elberta. Delicious, honey-sweet flesh. After years of rigid tests we can now unqualifiedly recommend Golden Elberta Cling as the Best Canning Peach.

The fruit resembles Stark Early Elberta. The same marvelous golden color. Superb Quality. Honey Sweet juice and flesh. Most alluring quality of any Clingstone. So firm and solid, excellent shipper. Fine for Home Yards and Market Orchards. Introduced and sold ONLY by Stark.

HALATE—A New Peach

Ideal to Extend Hale-Elberta Season

A delicious new Late Yellow Freestone Peach, from Stark Bro's famous Experimental Orchards. Fruit resembles Hale. Tree has vigor of Elberta. Largest highest quality—better flavor than either Hale or Elberta. Comes on market when yellow peaches always bring top prices. Halate is one of the finest varieties both for eating fresh and for canning. Favorite for Home Yards and Local Market. Ripens two weeks after Elbertas. Sold ONLY by Stark.

STARK LATE ELBERTA

Large, Late Yellow Freestone—Should Be in Every Planting—Home Yard or Market to Give Succession of Ripening.

This magnificent big peach fills the gap between Hal-Berta Giant and Krummel October. Ripens when peaches are scarce and high quality peaches are in great demand for eating fresh, for cobbler, pies and for canning. Hardy, vigorous tree.

This genuine "Record Bearing" Strain Sold ONLY by Stark.

KRUMMEL OCTOBER

Best, Handsomest Very Late Peach

Latest Yellow Freestone ripe 40 days after Elberta. Gloriously red and golden color. Large, almost round. Lusciously sweet clear to pit. Firm, ships perfectly. A general favorite for eating, drying; best canning quality, fine for sweet peach pickles. Tree strong grower. Extremely hardy. Bears very young. Every Home Yard, Local and Commercial Orchard will want Krummel October.

BURBANK'S JULY ELBERTA

Best Very Early Yellow Peach

New U. S. Patent. Freestone. Greatest Sensation of All Burbank Peach Creations!

"A Winner!" declares J. Carl Ward, fruit expert of New York. He says: *"I picked as many as 20 peaches from trees only 2 years old. We have planted 490 trees. Excellent size. Wonderful scarlet coloring so brilliant that fruit on trees can be seen a great distance. Very fine meat. A small pit. Perfect freestone. Flavor very unusual—to me it tastes like a blend of Early Crawford and J. H. Hale."*

Pouring in from the West, Central West, South, North, East and Canada, are enthusiastic reports of growers who pronounced Burbank's July Elberta—*"Peach Sensation of the Century!"*

"Extremely hardy—loaded when others fail." *"Year after year July Elberta makes us more money than all others in our orchard."* *"\$600.00 net profit from 2 1/2 acres."* *"Outstanding commercial peach."* *"Bear in spite of drought and cold."* *"Michigan's outstanding peach."* *"Fine in Canada."* *"Best peach for West."*

For Home Yards, Local Market Orchards, Commercial Orchards, Roadside Stands, in Back Yards and on the market, this Very Early Yellow Freestone with its large size, vivid red color, luscious flavor and extreme hardiness is bringing quick profits to its growers—often coming into bearing when only 2 years of age. Ripens nearly 3 weeks before Elberta, and ahead of Halehaven. Patented and sold ONLY by Stark.

Burbank's July Elberta

J. H. HALE

The Million Dollar Peach

This Huge, Mid-Season Yellow Freestone surpasses Elberta in both size and flavor.

Manmoth in size, Golden yellow color, overspread with vivid carmine. Perfect Freestone. Almost fuzzless. Golden yellow flesh. Firm, yet melting and tender. Most delicious shipper. One of the most popular peaches on the Mid-Season market and steadily gaining in favor.

Recommended for Home Yards, Local Market and Commercial Orchard plantings. A national favorite for eating fresh, canning, drying and preserves.

IN ARKANSAS BEARS AT 1 YEAR

"I planted eight 1/2 yr. J. H. Hale peach trees in spring. Four of them had nice and smooth peaches the next year. Tree a good stocky grower. I have confidence in this excellent quality peach."—Jos. Bachman, Franklin Co., Ark.

J. H. Hale

HALEHAVEN

New, Early Yellow Freestone

A Winner! A new peach creation combining the good qualities of J. H. Hale and South Haven. Although just recently introduced, Halehaven is steadily gaining in favor and is replacing South Haven in Home Yard, Local Market and Commercial Orchards.

Large size. Beautiful contrasting Red and Yellow color. One of the most beautiful peaches. Tree is hardy, strong and vigorous. Bears younger. Bears heavy crops. Bred and recommended by Mich. Exp. Sta. Ripens 17 days before Elberta.

Halehaven



FLAMING GOLD—No Fuzz—NEW

(TRADE-MARK)

Burbank's Amazing Fuzz-Free Peach-Nectarine

The famous fuzzless "Lost Nectarine" of Luther Burbank. An almost unbelievably rich blending of a delicious yellow freestone peach and a sprightly white nectarine. Big as a Champion Peach. Smooth, fuzzless, waxy-surfaced skin of flashing gold, blending into flaming red. The fuzz-free skin and delicious peach flavor that amazed the Horticultural World! Rich, golden-orange flesh of honey-sweetness—firm fleshed and juicy. Stone perfectly free and small. Splendid shipper. Does not crack. Ripens about one week before Elberta Peaches. Extremely hardy, young bearer—1-year trees in our nursery (after 14 below zero winter) were loaded with blossoms and set a good crop of delicious fuzzless peaches. W. E. Ickes, Tuscarawas Co., Ohio, writes: *"My young Flaming Gold trees bore 8 fruits when 1 year old."*

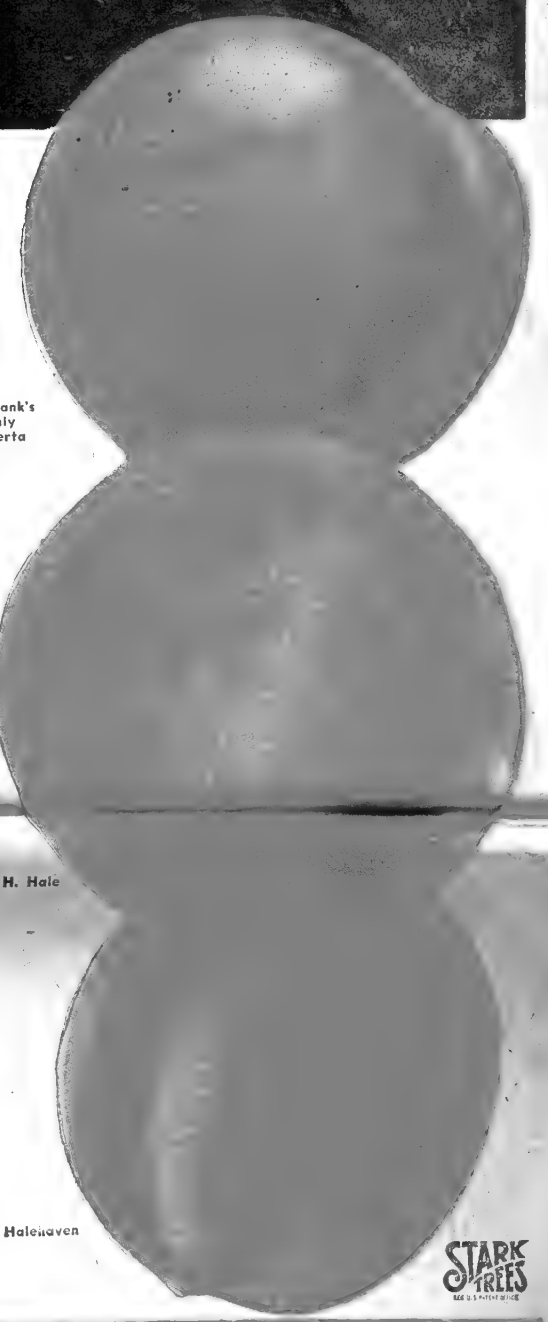
Trade-Mark. Trees Sold ONLY by Stark Nurseries.



PEACH RIPENING SEASONS, Including STARK-BURBANK Varieties

EVERY HOME OWNER SHOULD SELECT A CONTINUOUS SUCCESSION OF PEACHES RIPENING FROM EARLY SUMMER TO LATE FALL

- All varieties hereafter listed follow in Order of Ripening Season. Starred varieties (***) are the best of their type and ripening season.
- VERY EARLY**
 - ***WORLD'S EARLIEST — New Leader — described above.
 - MAYFLOWER — Very Early Red Blushed White Semi-Freestone. For home and market.
 - ***RED BIRD CLING, EARLY — Described above.
 - ***JUNE ELBERTA — Fully described above.
 - EARLY**
 - ***EUREKA HARDY—Very Hardy. Early Semi-Freestone. Quick Bearer. The "Ironclad" of the peach family. Beautiful rosy-cheeked white fleshed Semi-Freestone.
 - ***EARLY MAMIE ROSS — Early. Semi-Freestone. Delicious quality. Bright red-cheeked, creamy white flesh peach. Tree hardy.
 - ***FINCH—New U. S. Patent Peach. From the orchard of C. Howard Fisher, Canada. Ripe about a month before Elberta. Fruit is large. Splendid quality. Semi-Freestone when ripe.
 - ***REDHAVEN — New Leader. Described top Page 9.
 - ***CUMBERLAND—Early White Semi-Freestone. Fruit large. Quality very good.
 - ***GOLDEN JUBILEE — Fully described above.
 - ***ALTON—Fully described above.
 - ***BURBANK'S JULY ELBERTA—New Leader—A Winner! Described on Page 9.
 - MID-SEASON**
 - ***ROCHESTER—Early Yellow Freestone. A beautiful very hardy peach. Excellent quality. Large. Mottled red and gold. Yellow Freestone.
 - ***BURBANK'S JULY GOLD — A Leader. Early Yellow Freestone. Exceptionally young bearer and extremely hardy. 1-year trees in our nursery bore fruit after hard, long winter with 14 below zero weather. Fruit is clear orange yellow. Averages 2 1/2 to 3 inches in size. Rich clear golden yellow flesh, no red at pit. Delightful flavor. Excellent quality.
 - ***HILEY—Early White Freestone. Highly colored on sunny side. Perfect freestone. Long-keeper. Superb shipper. 2 weeks earlier than Belle of Georgia which it resembles.
 - ***SOUTH HAVEN—Early Yellow Freestone. Attractive yellow freestone. Good size, excellent quality. Tree vigorous, very hardy and productive. Recommended for Home Yards and Local Market Orchards. Originated by Michigan Exp. Station. Halehaven is better.
 - ***HALEHAVEN—Full described on Page 9.
 - ***CHAMPION — The Standard of Quality in White Peaches. A delicious peach. Flesh sweet, rich and satisfying. Tree hardy. A good bearer. Ripens 14 days before Elberta. Freestone.
 - ***STARK EARLY ELBERTA — A Leader. Described above.
 - ***CRAWFORD EARLY IMPROVED — Early Yellow Freestone. Deep yellow peach with striking red cheek. Flavor is exquisite.
 - LATE**
 - ***CRAWFORD LATE IMPROVED—Late Yellow Freestone. Large yellow Freestone. Delicious quality. Good shipper. Eating, canning, drying.
 - ***SHIPPER'S LATE RED — Late Yellow Freestone. Huge, red-blushed yellow peach of great beauty. Good quality. Fine commercial peach.
 - ***INDIAN BLOOD CLING — Big Red-Fleshed Peach—Late. Flesh red as a beet. Large. Handsome. Ideal for pickling and preserving.
 - ***HYSLOP CLING—"Sugar Cling"—Late White Clingstone. Large. Round. Handsome. Sweet, tender, juicy. For canning and preserves.
 - ***HALATE—A Leader. Fully described above.
 - ***HARDY-BERTA—U. S. Patent. A Leader. Late Yellow Freestone. Extremely hardy—bears when others fail. Bore even after trees stood 17 to 20 degrees below zero weather. Elberta type. Larger. Ripens 2 weeks after Elberta.
 - VERY LATE**
 - ***STARK LATE ELBERTA—Described above.
 - ***MAMMOTH HEATH CLING—Very Late White Clingstone. Large. Red blushed. Creamy white.
 - ***J. H. HALE—Fully described above.
 - ***HAL-BERTA GIANT — A Leader. Fully described on Page 8.
 - ***STARK SUMMER HEATH—Mid-Season White Canning Cling. A favorite for pickles. Wonderful for canning. Heath type. Snow-white flesh.



Burbank's July Elberta

J. H. Hale

Halehaven



APRICOTS

WILSON DELICIOUS—Our Leader—Very Early

Tests prove it "Best of All Apricots." Large size—20% larger than Moorpark. Beautiful. Red and orange yellow color. Firm. Delicious. Juicy with a rich, aromatic flavor. Fruit hangs well. Bears when others fail. Splendid keeper. Stockham Bro's wrote us "5 to 10 days earlier than any other apricot and sold for far more." Strong growing hardy tree. Fine for Home Yards, Local Market and Commercial Orchards. Delicious for eating fresh, cooking, canning and drying.

STELLA—Hardy

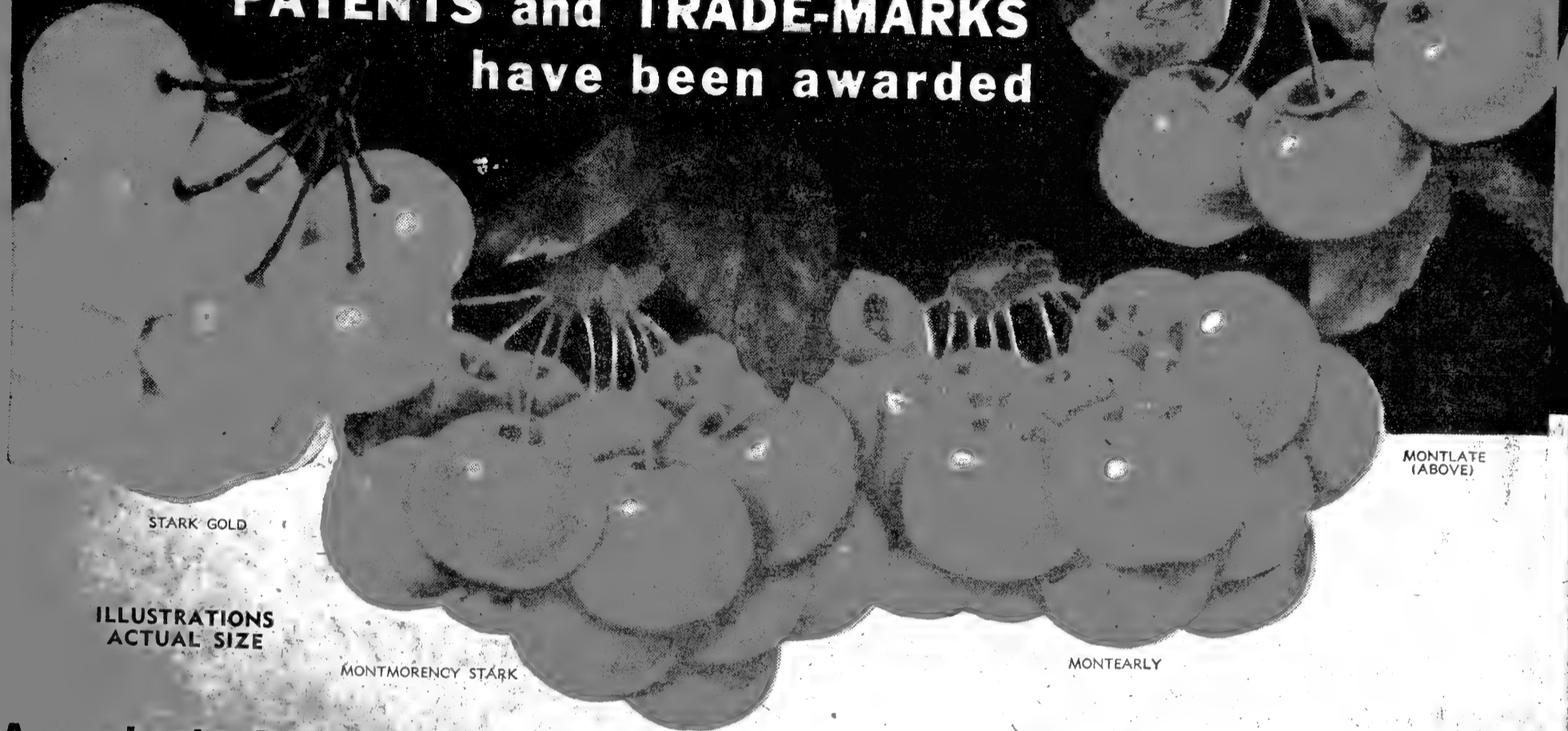
"The Apricot that is harder than a peach." Fruit is large. Delicious quality. Stella originated in Nebraska where the sub-zero weather demands hardiness in fruits. Stella not only thrives and bears in Nebraska but in states still farther North. Strong grower.



STARK CHERRIES

so big, beautiful, luscious
and different that

PATENTS and TRADE-MARKS
have been awarded



MONTLATE

STARK GOLD

ILLUSTRATIONS
ACTUAL SIZE

MONTMORENCY STARK

MONTEARLY

MONTLATE
(ABOVE)

America's Most Profitable New Cherries for Home and Market

Many Discovered, Introduced, Patented and Sold Only by Stark Bro's

Stark Choicest Improved Strains of Cherries are easy to grow and come into bearing quickly. You can often pick delicious, palate-tempting cherries the second or third year after planting—with crops increasing rapidly year after year. Sour or pie Cherries thrive in all climates—the severe cold of the Far North; the extreme heat of the Deep South. They grow and bear in drouth seasons and jilly sections.

Because it is such a delectable early-summer fruit for eating fresh, canning, quick freezing, drying, preserving, the Cherry is one of America's most popular fruits for Home Yards, gardens, small orchards as well as Commercial Orchards. Its riot of beautiful blooms in early Spring makes the Cherry Tree popular as an Ornamental Tree for Yards.

Every home—every farm should have at least a few of America's Choicest new Cherry Trees in the Front Yard, Back Yard or Garden.

Growers looking for quick-bearing and big profit crops will find the varieties described on this page the best and most profitable of their particular type and season—selected by Stark Bro's after long years of actual tests and experience.

(Trade-Mark)—World's Best Tart Pie Cherry

Extra Large Stark Strain—for pies, quick-freezing, canning, preserving and eating fresh. Never fails. Brilliant red in color. Tender yellow flesh. Packed with delicious juice. Makes pies, preserves, cobbblers and puddings of lip-smacking goodness.

Quick crops! These trees often bear fruit the second or third year after planting. Crops rapidly increase each year.

\$300.00 per Acre Extra from Chicken Yard. "I bought a 5 1/2-acre tract for chicken farm. It was planted to Apple trees with Cherry trees as fillers. They have never been cultivated or pruned. Yet my Cherry trees alone brought me an additional net income of \$300.00 per acre plus income from Apples and chickens."—A. K. McGraw, Wash.

STARK GOLD

(Trade-Mark)—Hardest Sweet Known

At last! An amazing **Hardy Sweet Cherry** tree for every home—for the North as well as for the South. Magnificent large Cherries. Superb, spicy, sweet flavor. A pure lustrous gold in color, without a single touch of red. Bore on a 2-year tree in Stark Test Orchard. Stood 40 degrees below zero in Nebraska. Hardy, healthy tree.

Ripens 2 weeks after Early Richmond. Hangs 10 days after ripening. Flesh is sweet, crisp, juicy, yet firm. A good shipper. Marvelous for eating fresh, canning and preserves.

"Success from Every Standpoint." "Gold Cherry is a success from every standpoint. Tree grows rapidly and bears young. Heavy crops. Good size. Quality fruit."—Francis Thompson, N. Y.

MONTEARLY

(U. S. Patent)—Tart, Pie Cherry

Earliest of All Sour Cherries—2 weeks BEFORE Montmorency. Larger and Better than Early Richmond and Earlier. Color is a deep rich wine color with deep red juice. Flavor less tart than regular Montmorency. Meaty, Superior shipper.

One Cherry expert says: "Montearly is going to put Early Richmond out of business." It is earlier and bigger and BETTER. Far superior for pies, preserves, quick-freezing and canning.

On the market just when truly fine Cherries command HIGHEST PRICES—early, when everyone is hungry for fresh cherries, pies, cobbblers and tarts. Montearly trees are Patented and SOLD ONLY by Stark Bro's.

MONTLATE

(U. S. Patent)—Tart, Pie Cherry

Montlate ripens 2 weeks AFTER Montmorency. Fully equal to Montmorency Stark in young and heavy bearing. Fruit sells for the same high prices as English Morelle, and bears heavier. Montlate Trees are Patented and SOLD ONLY by Stark Bro's.

John Porter of East Jordan (Mich.) Canning Co., says: "Montlate extends the Mont. season for gathering the crop as well as that for operating the canning factory. This is greatly to our advantage both as cherry growers and as canning factory operators."

For a continuous home supply of delicious Cherries for eating fresh, quick-freezing, pies, preserves, puddings, tarts and dumplings 6 weeks or longer each year, plant Montearly, Montmorency Stark and Montlate.

OTHER LEADING CHERRIES

SENECA. Earliest Sweet. Ripens here in May, before strawberries, more than two weeks earlier than other sweet cherries. Dark red, large, heart-shaped. Purplish-red, juicy flesh, rich sweet flavor. Tree is vigorous, productive and very hardy.

NAPOLEON—Stark Strain—Late. A large, yellow, pink blushed cherry. Thrives in all Sweet Cherry sections. Tree hardy. One of the heaviest bearers of all sweet cherries.

SCHMIDT'S BIGARREAU — Mid-Season — Sweet. Very large. Almost round. Beautiful dark Mahogany red skin. Dark red flesh. Resists cracking.

WINDSOR. Sweet. Profitable. Sells well. Ships well. Dark red. Extremely hardy. Resists rot.

SUDA HARDY—Late. Where a late tart cherry is wanted Suda Hardy should be planted. Tree is perfectly hardy and the fruit is produced in immense quantities. Always sells readily at premium prices.

DYEHOUSE. Very early. Better than Early Richmond—a week earlier. Best very early cherry, except Montearly. Strong grower.

EARLY RICHMOND. Ripe about a week later than Montearly and is not as good. Medium size, bright red.

BURBANK HONEYHEART

Late, Sweet (U. S. Patent). Burbank wrote: "Beautiful. Skin is red and gold, when fully ripe rich, glowing red. Crisp, juice-laden white flesh." Big—often one inch in diameter. Very small seed. Wonderful shipper.

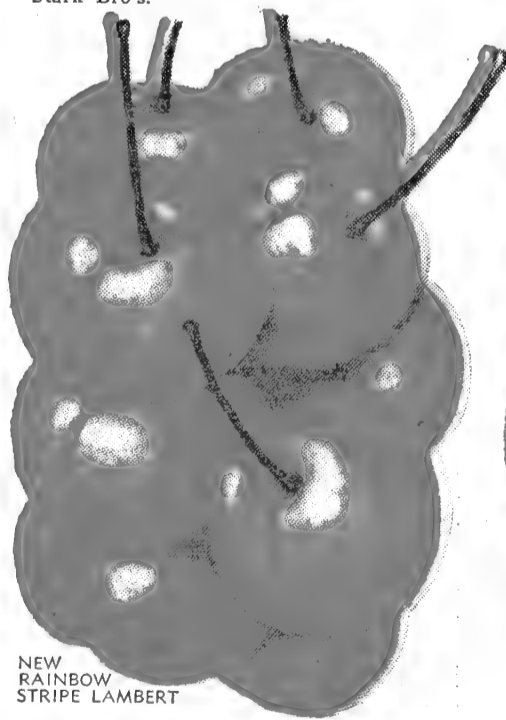
BING (Early Sweet). One of the most delicious dark red cherries, rich purplish, firm flesh—eating, canning, preserves. Succeeds from coast to coast. Tree hardy, foliage heavy, productive. Should be planted with Stark Lambert, which ripens later. Both are great favorites in Home Yard and Market Orchards.

BURBANK BLACK GIANT

A luscious new Sweet Cherry of large size. Created by the wizardry of Luther Burbank and prized by him as the best of his Black Sweet Cherries!

Glowing red flesh is packed with nectar-sweet juice. Firm and meaty. One of the best shippers—arrived in perfect shape after traveling thousands of miles in hot weather with no refrigeration.

The dark red entrancing beauty and distinctive, nectar-sweet flavor make Black Giant a favorite of the Home and Market growers. Tree is hardy. A young bearer. "Burbank's Black Giant is the king of all sweet cherries. Bears heavily; the fruit is just as you represent it in size and quality. Trees bear crops at a young age compared with other sweets. Fruit does not crack."—Francis E. Thompson, N. Y.



NEW RAINBOW STRIPE LAMBERT

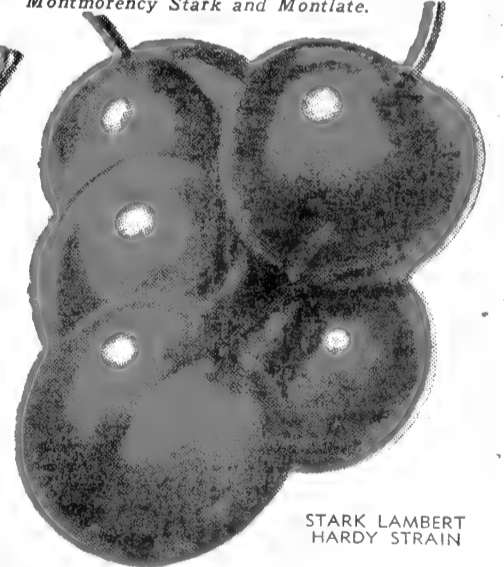
RAINBOW STRIPE (SWEET)

Startling Fruit Marvel, The Most Unique Cherry in the World.

Rainbow Stripe originated on a Lambert cherry tree limb as a true bud sport. It is a White Cherry with a narrow deep red Lambert-colored stripe from stem to tip!

Fruit is true Lambert except in color. The same large size, delicious flavor and beautiful form. Ripens in mid-season. Fine for Home Yards and Commercial Orchards. Makes a beautiful and sensational display on the markets. Excellent shipper.

Tree is hardy. Bears abundant crops of uniformly huge Cherries. Rainbow Stripe was purchased and introduced by Stark Bro's and trees can be obtained only from us.



STARK LAMBERT HARDY STRAIN

STARK LAMBERT (Hardy)

Hardy Strain—Early, Large, Sweet

The largest Black Sweet Cherry, except Burbank's Black Giant. Dark purplish-red, turning almost jet black when ripe. Skin glossy—tough enough to insure good shipping. Flesh firm, rich, sweet, juicy—of supreme quality. Our propagation is from a Parent tree which bore every year through a long period—and showed a marked improvement in hardiness and regular heavy bearing. It led also in size of fruit, gallons per tree, and vigor—producing crops after 24 degrees below zero.

BLACK TARTARIAN IMP.

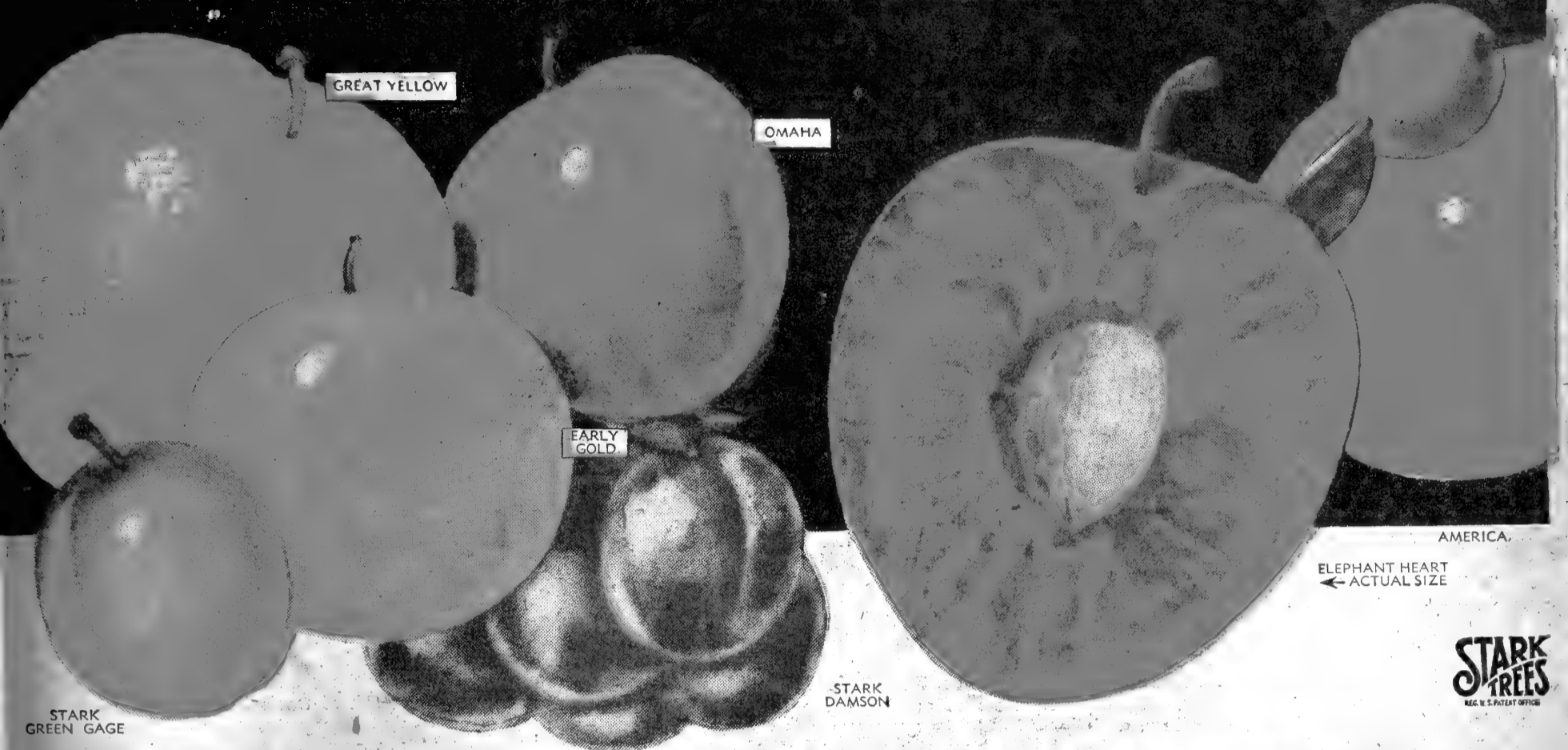
Deacon Strain. Early. Best and Hardest, most dependable of large Black Tartarian Sweet Cherries. Hardy, black team-mate for Stark Gold. Best pollinizer. Gets early high prices. Extra large. Black. Heart-shaped. Purplish-red-fleshed. Delicious for eating fresh, canning, pies, preserves. Should be in every orchard. Fine shipper.



BURBANK BLACK GIANT

STARK-BURBANK PLUMS

Largest, finest flavored, hardiest varieties



Burbank's Greatest New Plum Creations

For nearly half a century Luther Burbank worked constantly with his plant-breeding problems.

He always worked with a definite object in view. Take, for instance, the blood-fleshed plums—the tens of thousands of crosses made on this class of fruit were for the purpose of securing highest quality, largest size and a succession of ripening, so they could be enjoyed throughout the entire ripening season.

He collected hundreds of wonderful new hybrid fruits of outstanding merit. Among them hundreds of plums, peaches, cherries—and for all different purposes.

(Trade-Mark) Our \$3,000 Burbank Plum. Fruit, clear, Bright Golden Yellow, completely blushed with light cherry red when fully ripe. Large, Delicious quality. Very young, tremendous bearer. Tennessee grower reports he picked three crops from 4-year old trees. Hardy for North.

For eating fresh, canning, plum butter and jelly it is one of the best. Ships well. Thrives in chick yards, fruit gardens, commercial orchards from the Atlantic to the Pacific; from the Great Lakes to the Gulf.

PURPLE PLUMCOT
Half Plum—Half Apricot. Luther Burbank was the first man in the world to combine the flavor delights of both Plum and Apricot in one new fruit—the Plumcot. This PURPLE PLUMCOT is his finest blood-fleshed variety—huge, often 2 in. across. Gorgeous purplish-red, with flesh blood-red clear to pit. Rich—irresistibly delicious. Perfect freestone. Is bearing splendidly. One of the best of all Burbank's New Creations. Hardy—bore after 24 below zero.

OTHER STARK-BURBANK PLUM SELECTIONS

For Young Bearing, a Longer Ripening Season, Heaviest Bearing, Better Pollination, Plant Several Varieties. Plums Below Are Listed in Order of Ripening.

BURBANK'S EARLY GOLD (Shiro). Marvelously beautiful, transparent golden yellow plum—a huge honey-drop—sweet and excellent. Ripens very early. Another great Burbank origination. Fruit is extra large size and handsome. A tree loaded with this golden fruit is a wonderful sight. Tree is hardy, very prolific. Succeeds North and is one of the greatest plums for the South. Fine for eating fresh, sauce, plum butter, preserves, jelly. Recommended for Chicken Yards, Home Yards, Local Market Orchards.

BURBANK'S SANTA ROSA. Very Early. Favorite in Home Yards and Commercial Orchards. Won Gold Medal at Lewis and Clark Exposition. Handsome round, dark crimson plum; immense size, splendid quality. Firm flesh, strong skin, excellent shipper. Hardy, strong grower, good bearer. Cooking, eating, canning, market.

BURBANK'S AMERICA. Very Early. A full brother of Gold, Large, glossy, coral red—a most beautiful and delicious plum. Can always be depended on for crop. Tree large, very vigorous, thoroughly hardy, bears extremely young, and bears enormous crops every year. Succeeds everywhere. Excellent for eating fresh, canning, plum butter. Especially good for Chicken Yards and Fruit Gardens.

"Almost phenomenally free from rot."—Plums of N. Y. "Uninjured by 55 degrees below zero."—J. R. Williams, Elmsdale, Quebec. "Hardy, good quality and does not rot."—E. H. Riehl, Ill.

ABUNDANCE. Early. A large, bright, cherry red plum. Firm, sweet, excellent quality. Ships well. The tree is hardy, healthy and productive. Should be planted in every orchard—home yard and commercial. Good to eat fresh and for cooking, canning, plum butter and preserves.

GREAT YELLOW

Burbank's—U. S. Patented
Earliest Yellow Freestone Plum. Ripens even earlier than Early Shiro and is much larger. Largest, most outstanding solid golden plum of all the Burbank Wonder Creations. Our Test Orchard Supt. describes it as "a huge, wonderfully beautiful pure golden plum, large as a small apple." A freestone when fully ripe, from 2 to 2½ inches in diameter, excellent quality and with a very tiny seed for such a large plum. The name, GREAT YELLOW, was given it by Burbank, and is most fitting for it is pure yellow without sign of blush. Best of the Early Yellow Plums—mild and sweet, with just the right touch of acid near seed. Top budded limbs only a year and a half old bore a splendid crop of huge plums in North Missouri, after 14 below zero. The beauty of this huge translucent golden plum is beyond description. Flesh is very solid, and holds up remarkably well in shipping. Home Yards and Commercial Orchards should plant Great Yellow.

BURBANK'S INDIAN BLOOD (Duarte). A fine red-fleshed plum, but Elephant Heart larger, better. Trees upright fast growers, hardy. Fruit large, egg-shaped—flesh deep blood color, quality delicious. A plum of all around merit. Eating, cooking, canning, market. Thrive in Chicken Yards, Home and Commercial Orchards.

SUPERIOR (Minnesota 194). New. At last a Super-Hardy plum producing very large handsome fruit for far North. Prof. W. H. Alderman wrote, "Undoubtedly best plum introduced by Minn. Station." Tree outstanding for hardiness, vigor, early and prolific bearing. Fruit very large, beautiful dark red. Flesh rich yellow, firm, juicy—a lively sweet flavor. Excellent for eating fresh, plum butter and jelly, and preserves. Home Yard and Commercial Orchards.

OMAHA — Iron-Clad — Hardy Plum — Mid-Season. A very large plum. Dark rich red. Almost perfectly round. Golden yellow flesh is meaty, sweet and delicious.

Originated by Theo. Williams, a plum authority of Nebraska, who considered Omaha the best of all Iron-Clad-hardy plums. Extremely Hardy "After Coldest New Hampshire winter in 13 years Omaha still thriving" reports L. L. Colby. Excellent for eating fresh, for canning, cooking, plum butter and jelly. Thrives in Chicken Yards, Home Fruit Gardens and Commercial Orchards.

When we introduced it Mr. Williams wrote: "No other plum is so cosmopolitan as Omaha—it has fruited from Alberta, Canada, to the Gulf and from New Hampshire to the Pacific."

LATE GOOSE. One of the best Hardy Plums. Red, resembling Wild Goose, but much larger and much more valuable. Strong grower, extremely hardy. A heavy bearer. Should be grown everywhere, for home use and market. More popular than old Wild Goose because of its immense size. Eating, cooking, canning, market.

More work was probably done by Luther Burbank on plums, peaches and cherries than on other fruits, but his marvelous new creations of roses, pears, nectarines, prunes, plumcots and other fruits and flowers also stand in a class by themselves.

Our experts are confident that the new Burbank creations we are now offering will far outclass all other varieties of similar type and season. For example, many of his Plum Creations are so different from ordinary plums that they are almost distinct New Fruits—differing almost as much as peaches differ from pears.

ELEPHANT HEART

Burbank's New Freestone Giant. Red-Flesh Sensation. Largest Plum Grown—Amazing Flavor. Strong Grower. Hardy. The greatest triumph of all the Master Plant Breeder's painstaking life work of striving to create a freestone blood-fleshed plum of enormous size and transcendent quality and flavor—a glorious success and one that represents the first fruition of our expert's continuance of his life's work. Starting 'way back half a Century ago with 12 little seeding trees he worked diligently towards his goal. And—NOW—the triumphant climax, Burbank's "Elephant Heart," the supreme BEST of over 800 new varieties, of great promise that were perfected and bequeathed to Stark Bro's after his years and years of exacting selection, and rejection, when we took over the Burbank Experimental Gardens. After Stark Bro's years of tests of this plum—it earned a place at the very peak of Burbank's horticultural creations. One of the outstanding achievements of the Greatest Fruit Wonder Worker in the World's History.

RED AGE - Burbank's

Blood Flesh Freestone. Mid-Season. Resembles Elephant Heart. Gorgeous, large, red-fleshed plum, fit companion of Great Elephant Heart. Burbank describes it "Big—firm—small seed—sweet as sugar. Rich, full of delicious juice—regularly productive." Tree fine, strong grower. Wonderful shipper. Tree very young and heavy bearer. Never winter killed. Has withstood 24 below zero. 3-year old trees in Mo. loaded with huge crops. For eating fresh, canning, market. For Home Yard and Commercial Orchards.

Other Burbank Plum Creations
For complete list of New Burbank Plum Creations, see Price List—Page 14.

Plums are popular as yard or garden trees because they produce needed shade as well as an abundance of delicious fruit. And they prosper with little or no care. Plums are good for stews, preserving, jellies, jams, also canning. Plum tarts and many other delightful plum recipes delight every member of the family. Plums thrive in practically all good soil and are especially fine in chicken yards.

STARK GREEN GAGE — Our Favorite
Sweet as honey. Larger and better than old Green Gage. For preserving and canning it has no superior. Excellent for eating fresh, canning, cooking, preserving, market.

GERMAN PRUNE — Mid-Season. Our strain of German Prune is very large, hardy. Dark blue skin with light bloom. Yellow flesh is sweet, juicy and delicious. Excellent for eating fresh, for canning, drying and preserving. Thrives in Home Yards and in Commercial Orchards wherever prunes grow.

STARK DAMSON. The largest and best American Damson. A true freestone. Our propagation from extra-productive, record-bearing parent tree. Fruit deep purple, juicy, rich, small stone, fine for preserves. Tree upright, hardy, resistant to diseases, easy to grow, produces immense crops. Damsons are money makers and should be in every Home and Commercial Orchard. Excellent for preserves, canning, jelly and plum butter.

OTHER VARIETIES. We can also furnish the following other varieties of plums: Italian Prune, Burbank, Compass, Shropshire Damson, Red June, Tatge, Lombard Improved, Underwood Plums, President Prune and Stanley Prune.

STARK QUINCE

VAN DEMAN. (Trade-Mark) Our \$3,000.00 Burbank Quince. Best and largest of the Quinces—originated years ago by the great Luther Burbank—and today it still stands as the supreme and most desirable quince—no other variety compares with it in size, beauty and flavor.

ORANGE. An old favorite—still widely planted, but inferior to Van Deman—a vigorous, productive tree—good in quality.

Another STARK EXTRA VALUE

Stark's Patented Tree-Digger "gets all the roots" without the slightest injury. This super-power digger, equipped with Special Patented blade, cuts deep under the trees below the feeder roots, lifting them out gently and without shock or injury.

Now comes Amazing Improvement in bigger, hardier, more luscious PEARS



Pears Selected and Perfected for YOU by Stark-Burbank

LINCOLN *The Pick of All Pears*

From the Alleghenies to the Rocky Mountains—from the Great Lakes to the Gulf—genuine Stark LINCOLN has proved outstanding among Pears.

Fruit is a clear, beautiful golden yellow, with sometimes a glowing red blush. In size Lincoln is a large pear—larger than Bartlett. Fruit ships well. Its luscious quality and beauty command top prices.

Trees are remarkably resistant to blight. Produce heavy crops. Live and bear handsomer, better, bigger fruit during its long life. Original Lincoln tree lived and bore crops of luscious pears for more than 80 years. A leading Illinois horticulturist wrote us: "Grow Lincoln by the millions so they can be planted for yard, street and park trees."

Lincoln is recommended for Home Yards, Small Orchards and Commercial Orchards. Excellent for eating fresh, canning and for preserves. Introduced by Stark Nurseries.

"2-year old Lincoln Bearing." "My 2-year old Lincoln pear has 8 nice pears on it. I am really thrilled."—Mae Fulwider, Illinois.

"Stood Coldest Wisconsin Winter." "One of the oldest winters we ever had. Down to 30 below, Lincoln Pear and Elephant Heart Plum stood it perfectly."—Albert Koenig, Wisconsin.

"Finest I Ever Saw or Ate." "Lincoln Pears I set 4 years ago bore last season. Not the least sign of blight. If I was 10 years younger, I would plant 5 to 10 acres—finest I ever saw or ate."—Willis J. Wood, Ark.

"Best Pear in No. Carolina." "I have found Lincoln to be the very best pear for our section. Bears wonderfully well. Delicious for eating out of hand and wonderful for canning."—W. A. Braswell, N. C.

BARTLETT *A World-Wide Favorite*

A large Pear. Rich golden yellow with rosy blush. Very juicy. Indescribably delicious flavor that has made it popular everywhere. Bartlett is probably the most widely planted and best known pear grown. One of the best pears for eating fresh, for canning and for shipping. An excellent pear for the Home Yard and a favorite in the commercial orchards and on the market. Tree strong grower. Big crops every year. Blooms late. Great shipper.

Fame (Trade-Mark). A beautiful large yellow pear with carmine blush. One of the hardiest and most delicious pears in the world. Excellent for eating fresh and for canning and pear preserves. Tree is hardy, bears young, long-lived. Blight resistant. We highly recommend Fame for Home Yard Orchards and Local Market Orchards.

Gorham New. A late Bartlett. Fruit resembles Bartlett in its large size. Pink-blushed golden yellow skin. Juicy, melting, indescribably delicious flavor. Ripens 2 weeks later than Bartlett. Flavor is sweet, pleasingly aromatic. Flesh is white, tender, juicy. "Best new pear in many years" reports N. Y. Exper. Sta. where it originated. Resistant to blight. Excellent for eating, shipping and canning. Recommended for Home Yard Orchards and for Commercial Orchards.

Duchess (Angouleme — Ripens in the Fall). Extremely large — often weigh over a pound. Light yellow. Excellent quality. The housewife's favorite pear. Tree long lived. Healthy, hardy. Often bears at 2 years and produces a crop every year. A favorite for generations and is still one of the best. Should be planted in Home Yards and for market. Excellent for eating fresh, canning, cooking and preserving.

STARK SECKEL *Large Strain Sugar Pear*

Ours is an extra large strain. For more than a century Seckel has been the standard of excellence by which pears have been judged. Yet not 1/10th enough of Seckel have been planted.

Its spicy, honeyed flavor makes it the acme of pear perfection. Tree one of the healthiest and hardiest. Succeeds in all pear sections. Delicious when eaten fresh. Fine for sweet pickles. Every Home Yard and Local Market Orchard should have this delicious sugar pear. Ripens in late summer.

Burbank's Christmas Holiday Pear

Luther Burbank's great late pear creation! A huge, smooth skinned, lemon russet yellow pear. Attains its highest quality and most delicious flavor at Christmas time. Striking—long necked. Resembles Buerre Bosc in shape and flavor. Pick in November and store for a delightful treat during the Holidays. Trees grown and SOLD ONLY by Stark Bros.

Anjou Late Fall Pear. Large, handsome yellow pear blushed dull red. Richest flavor. Tree upright. Bears young. Bears heavy crops. Blooms late. Strong grower. Hardy. Remarkably free from blight. Good demand for them on markets at premium prices. Succeeds everywhere. A great favorite for Home Yard and Market Orchards. Good for eating fresh, cooking and preserving.

STARK TYSON—(Very Early Summer). Looks just like Seckel but ripens extremely early. Medium size, sweet, juicy, excellent quality. Known as Summer Seckel.

BUERRE BOSCO (Winter). A large, deep yellow, long-shaped extra sweet, juicy winter pear.

KIEFFER (Winter). The most widely planted pear because it bears and pays. Large, rich golden yellow. Fine for canning, preserves, baking.

CONFERENCE (Fall Pear). Bears big crops annually. Quality excellent. Similar to Bosc in shape—ripens earlier—better quality. Blight resistant. Home and market pear which is winning friends yearly.

EXTRA QUICK BEARING NEW GRAPES AND BERRIES

EARLY GRAPES

● **DIAMOND**—Best White Grape. Famous early ripening white grape. Prized for white wines and grape juice. Delicious quality. Flesh transparent, juicy, tender to melting. Fine grained. Aromatic. Sprightly. Hardy. Vigorous. Early bearer. Berries firm, medium to large, good Home Yard and Commercial Grape, for eating, for grape juice, jelly and market. Shown 1/2 size, at left.

● **NIAGARA**—"The White Concord." One of the most widely planted and best known white grapes. Bunch is large. Fruit has wonderfully delicious flavor. Ranks with Concord in vigor of vine and productivity.

● **WORDEN**—Larger and Earlier Than Concord. A glorious black grape. Better quality. Larger and 10 days earlier than Concord. One of the best commercial varieties grown. Hardy, healthy.

"Worden positively paralyzed us with its yield, eclipsing anything I have ever seen in size and perfection of bunch. Berries colossal compared to Concord."—H. B. Fullerton, L. I. Exp. Station.

MID-SEASON GRAPES

● **LUCILE**—Mid-Season Red Grape. A dark red grape, medium to large berry and bunch. Keeps well and ships well. One of the most beautiful hardy grapes and it sells well. Every Home Yard and Vineyard should have them. Eating fresh, jelly, grape juice and market.

● **HICKS**—Improved Large Concord. Larger and better than Concord. Berries are larger, roundish, dark purplish to black covered with heavy blue bloom. Flesh is juicy, fine grained, sweet, mild and delicious. Heavier bearer and stronger grower than Concord. Ripens with or a little before Concord. Strongly recommended for Home Yards and for commercial vineyards. Excellent for eating fresh, jellies, jams and grape juice.

● **CONCORD**—Best Known Black Grape. Universally popular black grape. Large bunch and berry. One of the heaviest bearers. Healthy, hardy, vigorous vine. Every Home Yard should have them for eating fresh, grape juice, jelly and jams. One of the most widely planted commercial grapes.

● **CACO**—New Red Grape. A very promising new red grape. Berries very large. Sparkling wine-red. One of the most beautiful grapes ever produced. High quality—rivaling finest hothouse grapes. Every Home Yard will want this excellent new grape for eating fresh, for jelly or grape juice. Home Yard growers will find it very popular and profitable.

● **STARK DELICIOUS** — (Trade-Mark)—Greatest of All Red Grapes. Best red grape ever discovered. Often bears on one-year vines. Stark Delicious has become so popular we have never been able to grow enough to supply the demand. So beautiful, the bunch so large and handsome, its quality so delicious that it is winning friends all over the country. Delightfully sweet and rich—comparing with Delaware in quality. For eating out of hand, for the table, for jelly, for grape juice, for market.—Stark Delicious is ideal. Shown 1/2 size, at left (red).

● **WINE GRAPES**. Grapes especially suitable for wine are Clinton—black, tart spicy for the North; Ives—black, hardy, thrives in all climates; Cynthia—black, especially suitable for the South.

OTHER VARIETIES—For complete list of grapes, see Price List, Page 14.

STARK RASPBERRIES

● **REDPATH**—Improved Latham. Stark's strain plants. Free from Mosaic.

● **CHIEF**—Early New. Fine new sort, seedling of Latham. Bright red, slightly smaller than Latham, equal quality. Vigorous heavy bearer, begins about a week before Latham. Profitable for early market.

● **FLAMING GIANT** (Ohta) Hardest. Giant grower. Medium size red berry. Thrives over widest territory North to South. Berries rich, firm, delicious. Excellent shipper. VERY PROFITABLE. "H. Harper, Ky., made \$3000 an acre off Flaming Giant Raspberries" first year bearing.

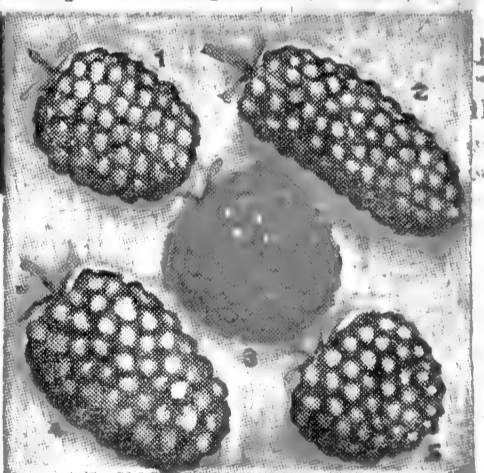
● **ST. REGIS EVERBEARING** (Red). Produces luscious fruit early to late. Real everbearing. Berries bright crimson, delicious, firm. "Extra size, fine flavor, heavy bearing."—E. S. Wolfer, Oregon.

● **CUTHBERT** (Red). Old standby. Widely planted for many years. Firm, large, juicy.

● **NEWERGH**—New Red. A sensation in raspberries! Larger than any other red berry. Bright red, delicious. Tremendous bearer. Begins to ripen few days before Latham. Splendid shipper. Free from Mosaic. Shown 1/2 size, No. 3 above.

● **POTOMAC**—New Purple. Large, firm, quality very good. Hardy, vigorous, productive. Late long season. Equal in all respects to Columbian. Has marked resistance to Anthracnose.

● **CUMBERLAND** (Black). Standard black cap raspberry. Our best seller. Fruit is very large, firm and of highest quality. Plant is extremely hardy, vigorous and is EXTRAORDINARILY PRODUCTIVE. Ripens in mid-season. An excellent shipper. One of the most reliable and satisfactory sorts for home planting and dependably profitable for commercial growers.



● **LOGAN**—(New Black). Very popular new sort. Berries glossy black, fine quality. Nearly week earlier than Cumberland. Heavy cropper and holds up well through season. Valued for resistance to disease. Shown 1/2 size, No. 5 above.

● **BLACK PEARL**. Early season black cap, favored by many growers. Large berry, good quality. Good cropper. We prefer and recommend Cumberland and Logan.

STARK BLACKBERRIES

● **MERSEREAU**. Mid-season. Beautiful glossy black. Our best seller and a standard wherever blackberries are grown. Has the good points of the old Snyder but is larger, of better quality. Tendency to trail unless trained. Large, attractive fruit rather round, most delicious, and holds up well. One of best all-purpose blackberries for home and a dependable payer for commercial growers and canners. Shown 1/2 size, No. 1 above.

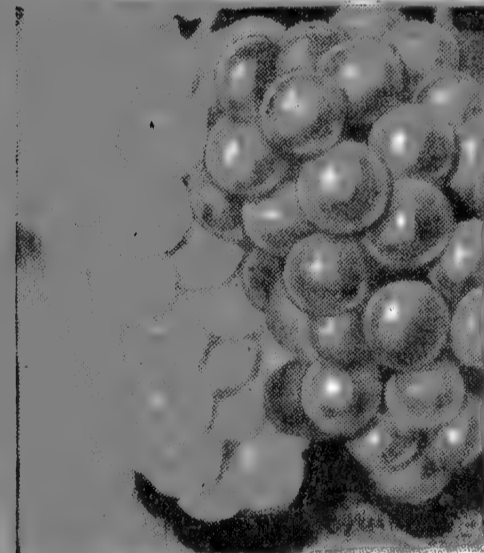
● **ELDORADO**. Season early to medium and long. Jet black berry of enormous size. Firm, sweet and of excellent quality. Plants are erect, vigorous, very hardy. Resistant to orange rust. With Mersereau, preferred by canners and used in large quantities. Shown 1/2 size, No. 4 above.

● **BLOWERS**. (Everbearing). Very large jet black berry, extremely sweet and excellent flavor. Vine hardy, rugged, good bearer. Fruit ships well.

● **ALFRED EARLY** (New) Blackberry. Very promising new variety. Fruit large to very large, firm, sweet, delicious. Plant erect, well-branched canes, vigorous and considered hardy.

● **EARLY HARVEST** Blackberry. Very early standard blackberry grown popularly for many years. Medium size, glossy black, good flavor, good shipper. Not as good quality, nor as large as Eldorado or Mersereau. Planted extensively in the South for canning.

● **Lucretia DEWBERRY**. Best of all dewberries. Fruit is large firm flesh, tender to melting and of most delightful flavor. The trailing plant requires support, is vigorous, hardy, productive. Every planting, home or commercial, should have Lucretia. Shown 1/2 size, No. 2 above.



DIAMOND and STARK DELICIOUS, 1/2 Size

VERY EARLY GRAPES

Grapes Listed in Order of Ripening

● **STARK ECLIPSE** (Trade-Mark) Best Very Early Black Grape. This is the earliest of our black grapes—at least a week ahead of Moore Early. Bunch and berries almost as large as Concord. Very finest quality—rich, sweet and do not crack in wet weather. Bunch handsome, compact and a tenacious hanger. Best of all for grape juice. Vine hardy and vigorous. One of the most popular grapes for both home yard and early market. Fine for eating, for jelly, jams, juice and a favorite on the early market.

● **FREDONIA**—New. Very Early. Black Grape. A new black grape that is winning great favor because of its early ripening and fine flavor. Fruit ripens 3 weeks earlier than Concord. Berries large, round, hang well. Flesh solid, but juicy and tender. A favorite for eating, for jelly, jams, juice and market.

● **MOORE EARLY**—Leading Black Grape of its Season. Concord type—ripening two weeks before Concord and one week after Fredonia. Bunch and berry large. Quality good. Vine vigorous, hardy. Bears heavily. Fine for grape juice. Recommended for eating, jelly, jams, juice and a favorite on the early market.

● **CAMPBELL EARLY**—Early Black Grape. A large grape that ripens about a week before Concord. Ripens through a long season. Quality excellent—not foxy. A beautiful large grape that we recommend for Home Yard and Market—for eating, jelly, grape juice.

The magic touch of the Plant Wizard creates new glories in STARK-BURBANK SHRUBS AND ROSES



Ornamental Gardening Brings Joy, Health and Strength

"By growing flowers, shrubs and trees, people will find release in these war times and DEVELOP MORALE, and also render valuable service in improving their homes and the community. Our school grounds, church yards, roadsides, towns generally, still need improvement in the direction of ornamental gardening."—Nat'l Victory Garden Conference.

Stark-Burbank Everblooming Roses and Climbers

BURBANK'S NEW SCARLET FLAME
Brilliant Red
A flaming, flashing constant blooming red rose sensation created by Luther Burbank. Vigorous plant literally covered with fiery red roses from early summer till hard frost. If you want red roses from June till November plant Scarlet Flame.
\$1.75 each; 10 for \$1.50 each

EDITH NELLIE PERKINS—Two-Tone Pink
40 lovely petals with vivid Orange-Cerise on the outside and soft Salmon-Pink on the inside combine to give you a beautiful two-tone Pink Rose you can depend on for a wealth of long-stemmed, mildly fragrant roses all summer. A hardy, thrifty grower. A rose of matchless beauty and one of the favorites for cutting.
\$1.25 each; 10 for \$1.00 each

E. G. HILL—Crimson
Each large, brilliant crimson, bloom is borne singly on a long strong stem, making it one of the most valued roses for cutting. Very double. Fragrant.
\$1.25 each; 10 for \$1.00 each

ETOILE de HOLLANDE—Deep Crimson
The Universal favorite everblooming Crimson Rose. It charms continuously with its delightful color, its beautiful form, its intense Rose fragrance and its long strong stems. It is vigorous, healthy—one of the best Red Roses.
\$1.25 each; 10 for \$1.00 each

MARGARET MCGREY—Orange-Scarlet
In the newly opened flower the color is a scintillating orange-scarlet which ages to a pleasing carmine-rose. Rose fragrance. One of the best and most popular. Blooms constantly from June till hard frost.
\$1.25 each; 10 for \$1.00 each

MRS. AARON WARD—Yellow
Pointed buds of rich yellow. Very fragrant. Continuous bloomer.
\$1.00 each; 10 for 90c each

MRS. CHAS. BELL—Salmon Pink
A superb sport of the famous RADIANCE with all the excellent qualities which makes RADIANCE the most dependable and most satisfactory rose in America. In color, Mrs. Chas. Bell is a Shell-Pink with a heavy Salmon suffusion, giving it the true opalescence of a pearl. Strong grower. Long, strong stems. Will thrive just like RADIANCE and RED RADIANCE. For a variety of lovely blooms, plant the three Radiance—Pink Radiance, Red Radiance and Mrs. Chas. Bell.
\$1.00 each; 10 for 90c each

RED RADIANCE—Brilliant Cerise-Red
A sport of Radiance with all its superior qualities of vigorous growth, dark green foliage and disease resistance. It has the same exhilarating perfume as Radiance, but the color is a brilliant Cerise-Red which is especially brilliant in fine soil. Plant with Radiance and Mrs. Chas. Bell for a profusion of lovely roses from early summer till hard frost.
\$1.00 each; 10 for 90c each

K. A. VIKTORIA—White
Long shapely buds open to fine-petaled creamy white flowers with a slight lemon tint in the center. When fully open, the delightfully fragrant blooms are cream-white. The favorite rose for cutting.
\$1.25 each; 10 for \$1.00 each

MME. EDOUARD HERRIOTT—Copper
Large, semi-double flowers in a color harmony of Orange Red and Salmon, producing an indescribably beautiful Copper color. Known throughout the world as the Daily Mail Prize Winner.
\$1.00 each; 10 for 90c each

PRESIDENT HOOVER
Scarlet, Yellow, Cerise-Pink
Multicolored Everblooming favorite. Gold Medal winner. Large, fragrant blooms. Long, strong stems. Excellent for cutting.
\$1.25 each; 10 for \$1.00 each

RADIANCE—Pink
Has headed the list for years and is still one of the most popular and satisfactory Pink Roses. It grows and thrives in every soil and climate where Roses can be grown, and blooms continuously. The large, two-tone Pink Rose—light inside and almost carmine on the outside of the petals—is similar in form to a Darwin tulip. Radiance, Red Radiance and Mrs. Chas. Bell are the reliable combination for long-stemmed roses from June till November.
\$1.00 each; 10 for 90c each

SUNBURST—Yellow
One of the best yellow everblooming Roses and highly prized by all who have it in the garden. Extremely long, orange-yellow buds of delightful fragrance. Blooms continuously.
\$1.25 each; 10 for \$1.00 each

MME. JOSEPH PERRAUD—H. T. Buff
A rose of unusual charm, both in bud and open bloom. The long, pointed, opening buds have delightful glowing yellow sunset shades which change to mazarine-buff as the fragrant flowers slowly unfold. This is one of the loveliest roses in pastel-shades.
\$1.50 each; 10 for \$1.25 each

TALISMAN—Orange-Yellow and Red
Everbloomer. Multicolored. Free in bloom. At its gayest it is a glorious combination of orange, yellow and rose-red. It is one of the finest of all garden Roses for cutting as the blooms are long-lasting and come singly on strong, erect stems. The fragrant flowers are much more highly colored in autumn.
\$1.25 each; 10 for \$1.00 each

BABY RAMBLER
Red, White, Pink or Salmon
A dwarf type, everblooming rose about 2 ft. high. Best for bedding, edging, foundation plantings. Produces clusters of bright blooms all summer.
\$1.00 each; 10 for 90c each

BURBANK'S COPPER CLIMBER
(U. S. Patent)
First of its kind. A hardy NEW Burbank Creation so distinctive in its harmony of glowing copper salmon it is difficult to describe. Long pointed tea-rose-like buds are borne on long stems which make it a good cutting rose.
\$1.75 each; 10 for \$1.50 each

BURBANK'S SNOWHITE CLIMBER
(U. S. Patent)
New, Hardy Burbank Creation. The World's first white climber with large double tea-rose-like flowers. Delightfully fragrant. Long stems. Fine for cutting. Burbank's Copper Climber and Burbank's Snowwhite Climber are Patented and can be SOLD ONLY by Stark Bro's Nurseries.
\$1.75 each; 10 for \$1.50 each

CLIMBING AMERICAN BEAUTY—Red
One of the first Climbers to bloom, and gives a profusion of large, fragrant red flowers. Magnificent on trellis or porch with flowers almost covering the entire plant.
90c each; 10 for 80c each

EXCELSA—Dark Red
Known as the "Red Dorothy Perkins," it is the most dependable red Rambler. Hardy, disease-resistant.
80c each; 10 for 75c each

GARDENIA—Yellow
Early blooming. Tea-rose shaped buds of unusual fragrance open into cream colored flowers which are fine for cutting.
\$1.00 each; 10 for 90c each

PAUL'S SCARLET CLIMBER—Brilliant Red
The large flowers borne in clusters are brightest scarlet, and give a flashing display of color in June and lasts for several weeks. The best bright red climber and does not fade.
\$1.00 each; 10 for 90c each

STARK ORNAMENTAL TREES, SHRUBS AND PLANTS

STARK SHADE TREES

SILVER MAPLE (Acer dasycarpum)
Popular rapid growing, hardy tree to 40 ft. height. Ideal for street, lawn and park planting for quick, dense shade. Desirable and useful for all sections. Thrives on almost any soil.
Size 6 to 8 ft.
Price \$2.00 each; 10 for \$1.75 each

NORWAY MAPLE (Acer platanoides)
Beautiful, symmetrical tree with dark green foliage. Hard maple type, long lived but slower growing than Silver Maple. Very ornamental and attractive tree for street, lawn or park planting.
Size 6 to 8 ft.
Price \$3.75 each; 10 for \$3.50 each

LOMBARDY POPLAR (Populus nigra italica)
Tall, columnar, rapid growing tree of stately appearance. Ideal for background screen and skyline effect on lawns or in parks. Seldom more than 6 ft. spread with height up to 60 feet. Popular everywhere.
Size 6 to 8 ft.
Price \$1.50 each; 10 for \$1.25 each

AMERICAN ELM (Ulmus americana)
Our grandest shade tree, famous in American history. Medium rapid grower, succeeds everywhere. Wonderful street and lawn tree. Beautiful and stately in appearance. Very hardy.
Size 6 to 8 ft.
Price \$2.25 each; 10 for \$2.00 each

CHINESE ELM (Ulmus pumila)
Recently introduced from the Orient to become suddenly popular throughout the country. Most rapid growing shade tree. Height 50 feet. Grows anywhere even under adverse city conditions. Beautiful, small foliage on graceful willow branches. Drouth resistant.
Size 6 to 8 ft.
Price \$2.25 each; 10 for \$2.00 each

HEDGE PLANTS

AMUR PRIVET (Ligustrum amurense)
Hardy northern type, rapid growing privet that makes an attractive hedge. Can be sheared to any desired height for dense hedge planting around the lawn or formal flower garden.
Size 18 to 24 inches. Price 40c each; 10 for 35c each; 100 for 30c each.

CALIFORNIA PRIVET (Ligustrum ovalifolium)
Rapid growing hedge with attractive dark green foliage. Excellent clipped hedge plant where winters are not too severe.
Size 18 to 24 inches. Price 30c each; 10 for 24c each; 100 for 20c each.

BARBERRY—See Shrubs above

SELECT STARK SHRUBS

JAPANESE BARBERRY (Berberis thunbergii)
Dwarf, compact growing shrub with small leaves and slender branches. Flowers small but followed by red berries that hang on bush all winter. Ideal for foundation, hedge or corner plantings. Foliage turns brilliant orange and scarlet in fall. Sharp protective thorns turn small animals and intruders. Can be trimmed to any desired height.
Size 18 to 24 inches. Price 50c each; 10 for 45c each; 100 for 40c each.

THORNLESS JAPANESE BARBERRY
U. S. Patent (Berberis thunbergii)
Same as above except it has no thorns. Can be used for same purpose as regular Jap-Barberrry. Height 3 feet.
Size 18 to 24 inches. Price 75c each; 10 for 70c each; 100 for 65c each.

JAPANESE RED-LEAVED BARBERRY
(Berberis thun. atropurpurea)
Attractive red or wine colored foliage through spring and summer. Height 3 ft. Similar in growth to Jap. Barberrry. Red berries in fall. Distinctive appearance. Colorful all summer. Fine for foundation or hedge plantings.
Size 12 to 18 inches. Price 60c each; 10 for 55c each; 100 for 50c each.

ROSE ALTHEA (Hibiscus syriacus)
A tall, upright growing shrub to 8 ft. A showy, large, double rose-like bloom resembling Hollyhocks. Bloom from July until frost. Useful for tall accent in foundation or border planting or for flowering hedges. Can also furnish in white, red and purple.
Size 2 to 3 ft. Price 80c each; 10 for 75c each

BUTTERFLY BUSH (Buddleia farquhar)
Covered with clusters of purple lilac-like flowers from July till frost. Very attractive. Height 5 ft. Used around foundation, for specimen or border planting. Attracts butterflies. Perennial in northern sections.
Size 2 year. Price 75c each; 10 for 70c each

BORDER FORSYTHIA (Forsythia intermedia)
A gracefully drooping shrub with bright yellow bell shaped flowers appearing early in the spring before the foliage. A real harbinger of Spring. Height 6 ft. Beautiful shrub with glossy green foliage. Useful for foundation, yard or park planting.
Size 2 to 3 ft. Price 75c each; 10 for 70c each

BILLIARD SPIREA (Spirea billiardi)
Stately shrub with an attractive cone-shaped cluster of lavender-pink blossoms in June. Height 5 ft. For foundation and borders.
Size 2 to 3 ft. Price 60c each; 10 for 55c each

SNOWHILL HYDRANGEA
(Hydrangea arborescens grandiflora)
Begins blooming in June and lasts until late summer. Large, ball shaped white blossoms that are very showy. Medium height, dense compact bush to 4 ft. For foundation and border planting. An old favorite.
Size 18 to 24 ins. Price 85c each; 10 for 80c each

HYDRANGEA (Hydrangea pan. grandiflora)
Very attractive with its huge cone-shaped panicles of white blossoms that often measure one foot in length. When blossoms are fully opened they turn pink. Blooms in July and blossoms last until late summer. Height fully grown, 8 ft. Can be pruned to tree form or left to grow as bush. Ideal as specimen, foundation or border shrub.
Size 18 to 24 ins. Price 85c each; 10 for 80c each

PINK WEIGELA (Weigela rosea)
A favorite of long standing with a profusion of bright pink blossoms covering the drooping branches in May and June which gives it unsurpassed beauty. Height 6 feet.
Size 3 to 4 ft. Price 90c each; 10 for 85c each

RED WEIGELA (Weigela Eva Rathke)
Heavy bloomer with colorful dark red bell-shaped blossoms during May. Adds attractive color to foundation or border planting. Height 5 ft.
Size 2 to 3 ft. Price \$1.00 each; 10 for 95c each

RED TATARIAN HONEYSUCKLE
(Lonicera tatarica sibirica)
A rapid, tall growing shrub that attains a height of 12 ft. Pink blossoms in April followed by red berries in summer and fall. Dense, compact bush with dark green foliage. Useful for untrimmed hedges or tall borders.
Size 3 to 4 ft. Price 85c each; 10 for 80c each

FLOWERING ALMOND (Prunus glandulosa)
Early blooming dwarf shrub with small, very double pink rose-like blossoms that entirely cover slender branches before leaves appear in Spring. Height 3 ft. Beautiful shrub and a popular favorite for foundation planting or border.
Size 18 to 24 ins. Price 90c each; 10 for 85c each

WHITE KERRIA (Rhodotypos kerrioides)
A useful shrub with crinkly, dark green leaves and snowy white strawberry-like blossoms. Blooms in April and May with scattering blossoms throughout the season. A popular favorite for foundation or borders.
Size 2 to 3 ft. Price 65c each; 10 for 60c each

LUDWIG SPAETH LILAC (Syringae vulgaris)
An outstanding variety of French lilac with large clusters of purplish red blossoms during April and May. Fine for lawn or border planting. Height 6 ft. (Other colors and varieties of French lilacs can be supplied also).
Size 2-3 ft. Price \$1.50 each; 10 for \$1.25 each

ANTHONY WATERER SPIREA
(Spirea anthony waterer)
Very showy, dwarf shrub that is covered with rosy-red clusters of blossoms during May and later. Low growing, dense, compact bush seldom attains height of more than 2 ft. Fine for low foundation, entrance or yard.
Size 18 to 24 ins. Price 85c each; 10 for 80c each

THUNBERG SPIREA
The earliest blooming spirea. Slender, drooping branches literally covered with white flowers before the leaves appear in April. Dense compact to height of 4 ft. Splendid for foundation, entrance and lawn planting.
Size 2 to 3 ft. Price 75c each; 10 for 70c each

YANHOUTE SPIREA—"Bridal Veil"
Literally a snowbank with its thickly set clusters of pure white flowers on slender, gracefully arching branches during May. Very popular for foundation, entrance, border and flowering hedge planting.
Size 3 to 4 ft. Price 60c each; 10 for 55c each

STARK PEONIES

Our selection of varieties
70c each; 10 for 60c each

EDULIS SUPERBA—Pink
90c each; 10 for 85c each

FELIX CROUSSE—Red
\$1.50 each; 10 for \$1.25 each

FESTIVA MAXIMA—White
95c each; 10 for 90c each

OFFICIALIS RUBRA—Red
\$1.50 each; 10 for \$1.25 each

QUEEN VICTORIA—White
85c each; 10 for 80c each

CLIMBING VINES

CLEMATIS
SWEET AUTUMN—Masses of white, very fragrant blooms in Autumn.
85c each; 10 for 80c each

JACKMAN—Large, rich velvety purple blooms cover entire plant in June and July.
\$1.75 each; 10 for \$1.50 each

HALL'S JAPANESE HONEYSUCKLE—Fragrant. Creamy and Yellow flowers all summer.
75c each; 10 for 70c each

IVY
ENGELMAN'S—Rapid growing. Clings to walls.
70c each; 10 for 65c each

PRICE LIST OF STARK PRIZE FRUIT TREES

WE PAY all Shipping Charges on each cash order of \$30 or more at regular prices listed herein.

On orders under \$30 add 10% of cost of order, to help cover packing, shipping, baling, etc. All prices subject to change without notice.

Government Certificates of Inspection on ALL shipments. No diseased trees permitted in our nurseries.

Starred Thus — ***, **, * — Are the best of Their Type and Ripening Season.

Every Tree Listed Is Stark RECORD-BEARING Strain — Grown By Stark SPECIAL-WHOLE-ROOT Grafting Method

UNCLE SAM Urges Fruit Planting NOW.

The U. S. Government is urging every farmer and suburban home owner to plant Home Yard Orchards and grow an abundance of delicious tree-ripened fruit so essential to health and strength of the nation.

Fruit is easy to grow and fruit trees increase in value year after year. Plant Stark Young-Bearing and Heavy-Bearing varieties for quick crops of highest quality fruit. HELP FEED AMERICA!

SAVE MONEY — Buy This FALL — Gain a Year!

TERMS—All Cash With Order. On orders of 50 trees or more, parties known to us to be reliable and well rated, we will accept 20% cash with order, remainder on arrival.

REPLACEMENT: We will re-fill absolutely FREE any stock does not reach customer in good condition, if notified immediately on arrival, so we can make claim on Transportation Company.

GUARANTEE—If any nursery stock proves untrue to name labeled, we agree on satisfactory proof of such untruthfulness to name refill with new stock FREE, any stock so proven to be untrue to a or at our option, to refund the purchase price thereof—if we notified the first fruiting or blooming season. Stark Bro's give further warranty, express or implied.

Stark APPLE Trees

Stark Exclusive "LEADER" APPLE Trees

Record-Bearing Strains	EACH RATE (1 to 10) Trees	10 RATE (10 to 30) Trees	100 RATE (30 to 50) Trees
4 to 7 ft. size	\$1.75	\$1.50	\$1.25
3 to 5 ft. size	1.50	1.25	1.00

- Sold ONLY by Stark Nurseries
- ***Starking —Trade-Mark (Double-Red Delicious.) Younger Bearer. Later Keeper.
- ***Stark Golden Delicious—Youngest Bearer.
- ***Jon-A-Red—(U. S. Pat.) Amazing New Red Jonathan "Sport." Colors quicker. Keeps longer.
- ***Staymared—(Trade-Mark). Solid Rich Red Stayman Winesap.
- ***Scarlet Staymared—Flashing Bright Red Stayman Winesap. (U. S. Pat.)

These Stark Exclusive and Patented Leaders are SOLD ONLY by Stark Nurseries — BEWARE of Imitations!

"SELECTED" APPLE Trees

Record-Bearing Strains	EACH RATE (1 to 10) Trees	10 RATE (10 to 30) Trees	100 RATE (30 to 50) Trees
4 to 7 ft. size	\$1.50	\$1.25	\$1.00
3 to 5 ft. size	1.25	1.00	.85

Listed in order of Ripening, earliest first, etc.

- ***EARLY RED BIRD
- **HENRY CLAY
- *YEL. TRANSPARENT
- *Lodi (Early Golden)
- *Melba
- *Sweet Bough
- **GRIMES GOLDEN, "Double-Life" (T.M.)
- *Banana (Winter)
- *Northern Spy, Dbl.-Red
- **JONATHAN, (Stark Young Bearer)
- **STARK KING DAVID (Trade-Mark) Cortland
- *BALDWIN, Dbl.-Red Sweet Delicious Bellflower Improved Senator (Trade-Mark)
- **STARK DELICIOUS (Trade-Mark)
- ***Rome Beauty, Dbl.-Red
- *Rome Beauty
- *Gallia Beauty
- *Champion (Trade-Mark)
- **YORK-A-RED (U.S.Pat.)
- *Red York Imperial
- *Stayman Winesap
- *Giant Genitor (T.M.)
- *Willow Twig, Dbl.-Red
- **BLACK BEN (T.M.) Turley
- **WINESAP, Va. Strain
- *Mam. Black Twig Imp.
- *Paragon Winesap
- *Maiden Blush
- **Gravenstein, Crimson
- *Wealthy, Triple-Red
- *Imperial Rambo
- Milton
- **McIntosh Red
- R. I. Greening
- Northwest Greening
- Fameuse (Snow)
- Kendall
- Macoun

Stark PEACH Trees

Stark Exclusive "LEADER" Peach Trees

Record-Bearing Strains	EACH RATE (1 to 10) Trees	10 RATE (10 to 30) Trees	100 RATE (30 to 50) Trees
4 to 7 ft. size	\$1.65	\$1.40	\$1.15
3 to 5 ft. size	1.40	1.15	1.00
2 to 3 ft. size	1.15	1.00	.90

Listed in order of Ripening, earliest first, etc.

- ***World's Earliest —Trade-Mark. Earliest Known Peach. Improved Red Bird. 10 days earlier.
- ***Burbank's July Elberta —(U.S.Pat.)—New, Very Early Yellow Free.
- ***Burbank's July Gold—Early Yellow Free—Very Fine Quality.
- ***Stark Early Elberta—Summer Gleason. T.-M. Best Flavor. Fine for Canning.
- ***Golden Elberta Cling—World's Best Canning Peach. Mid-Season.
- ***Burbank's Giant—Mid-Season Yellow Free—Fine for Canning. No Red at Pit.
- ***Flaming Gold, No Fuzz—Burbank's New \$3.00 Nectarine (T-M) Extra
- ***Hal-Berta Giant—(U. S. Pat.)—World's Largest Peach. Mid-Season Yellow Free.
- ***Halate—(Trade-Mark)—New, Huge Late Yellow Freestone.
- ***Hardy-Berta—(U.S.Patent)—Huge, Hardy, Late Yellow Freestone.
- ***Stark Late Elberta—(T-M)—King of All Very Late Yellow Freestones.

Above Stark Exclusive and Patented Leaders are SOLD ONLY by Stark Nurseries — BEWARE of Imitations!

- ***J. H. Hale—"Million Dollar Peach"—Huge Mid-Season Yellow Freestone.
- ***Red Haven—New, Earliest Yellow Freestone. Sweet—Bear Young, Heavy Crops.
- **Fisher—(U. S. Pat.) Handled by license of patentee.

Stark "SELECTED" Peach Trees

Record-Bearing Strains	EACH RATE (1 to 10) Trees	10 RATE (10 to 30) Trees	100 RATE (30 to 50) Trees
4 to 7 ft. size	\$1.40	\$1.15	\$1.00
3 to 5 ft. size	1.15	1.00	.90
2 to 3 ft. size	1.00	.90	.80

Listed in order of Ripening, earliest first, etc.

- VERY EARLY
- MID-SEASON
- LATE
- VERY LATE
- ***RED BIRD CLING
- **June Elberta
- Mayflower
- **EUREKA, Hardy
- *Early Mamie Ross
- **CUMBERLAND
- **ALTON
- *Rochester
- *Hiley
- *South Haven
- **HALEHAVEN
- *Champion
- *Crawford Early Impr.
- **Ella of Georgia
- *Giant Snowball
- **Illinois
- ***ELBERTA (Queen Strain)
- *Stark Summer Heath
- *Crawford Late Impr.
- Shipper's Late Red
- *Big Indian Blood Clg.
- *Hyslop Cling
- *Mammoth Heath Cling
- *Stark Heath Cling
- **KRUMMEL OCTOBER

Stark PEAR Trees

(VERY Scarce—Order Early)

Stark Exclusive "LEADER" Pear Trees

Record-Bearing Strains	EACH
4 to 7 ft. size	\$2.50
3 to 5 ft. size	2.25

***LINCOLN (Aug.-Sept.)

**Burbank's Holiday Pear (Nov.-Dec.) \$1.00 Extra

**Fame (Oct.)

**Stark Seckel (Oct.)

**Conference (Oct.)

Stark "SELECTED" Pear Trees

(VERY Scarce—Order Early)

Record-Bearing Strains	EACH
4 to 7 ft. size	\$2.25
3 to 5 ft. size	2.00

**Anjou (November)

**BARTLETT (September)

*Beurre Bosc (October)

*Duchess (October)

*Garber (Oct.-Nov.)

**Gorham (October)

*Kieffer (Oct.-Nov.)

*Stark Tyson (Wallis Strain) (August)

Stark APRICOT Trees

(VERY Scarce—Order Early)

Record-Bearing Strains	EACH
3 to 5 ft. size	\$2.00
2 to 3 ft. size	1.75

***Wilson's Delicious

**Starkrimson (U. S. Patent)

**Stella Apricot (Hardy)

Stark QUINCE Trees

(VERY Scarce—Order Early)

Record-Bearing Strains	EACH
3 to 5 ft. size	\$2.50
2 to 3 ft. size	2.25

**Burbank's New Jumbo—\$1.00 Extra

*Van Deman (T.-M.) \$3,000 Leader, Burbank Creation

*Orange Quince.

STARK GRAPE VINES

LARGE SIZE 1-10 vines	10-25 vines	25-50 vines	If over 50 Vines wanted, Write Us. Listed in order of ripening	MEDIUM SIZE 1-10 vines	10-25 vines	25-50 vines
1.00	.90	.80	VERY EARLY	.90	.80	.70
.60	.50	.40	*Stark Eclipse (black)	.50	.40	.30
.40	.35	.30	*Fredonia (black)	.35	.30	.25
.50	.40	.35	*Moore Early (black)	.40	.35	.30
.50	.40	.35	*LUTIE (red)	.40	.35	.30
.50	.40	.35	*Green Mountain (white)	.40	.35	.30
.50	.40	.35	*CAMPBELL EARLY (black)	.40	.35	.30
.50	.40	.35	EARLY	.40	.35	.30
.50	.40	.35	Delaware (red)	.40	.35	.30
.50	.40	.35	*NIAGARA (white)	.40	.35	.30
.50	.40	.35	*DIAMOND (white)	.40	.35	.30
.40	.35	.30	*WORDEN (black)	.35	.30	.25
.50	.40	.35	MEDIUM	.40	.35	.30
.50	.40	.35	*LUCILE (red)	.40	.35	.30
.50	.40	.35	*Brighton (red)	.40	.35	.30
1.00	.90	.80	*HICKS (Big Concord) (black)	.90	.80	.70
.60	.50	.40	*King (black)	.50	.40	.30
.35	.30	.20	*CONCORD (black)	.25	.20	.15
1.75	1.50	1.25	*WALLIS GIANT (black)	1.50	1.25	1.00
.60	.50	.40	Caco (Wine-Red)	.50	.40	.30
1.75	1.50	1.25	*STARK DELICIOUS (T.M.)	1.50	1.25	1.00
1.75	1.50	1.25	*Spaethe (red)	1.50	1.25	1.00
.50	.40	.35	LATE	.40	.35	.30
.50	.40	.35	Catawba (red)	.40	.35	.30
.50	.40	.35	Cynthiana	.40	.35	.30
.50	.40	.35	Clinton	.40	.35	.30
.50	.40	.35	Ives	.40	.35	.30

Stark CHERRY Trees

Stark Exclusive "LEADER" Cherry Trees

Record-Bearing Strains	EACH RATE (1 to 10) Trees	10 RATE (10 to 30) Trees	100 RATE (30 to 50) Trees
4 to 7 ft. size	\$2.50	\$2.25	\$2.00
3 to 5 ft. size	2.25	2.00	1.75

- ***Stark Gold—(Trade-Mark)—Amazing "Bird-Proof" Hardy Sweet, Golden Cherry.
- ***Montearly—(U. S. Patent) Very Early Sour Cherry.
- ***Montmorency Stark—(Trade-Mark) King of All Home and Market Cherries.
- ***Montlate—(U. S. Patent) Late Sour Cherry
- ***Burbank's Black Giant—\$1.00 a Tree Extra
- ***Burbank's Honey-Heart—\$1.00 a Tree Extra (U. S. Patent)
- ***Stark Lambert—Dark Red Sweet Cherry.
- ***Black Tartarian Impr.—(Deacon Strain)—Hardy, Dark Red Sweet Cherry.
- ***Rainbow Stripe—(Lambert Sport)—Unique New Sweet Cherry.

These Stark Exclusive and Patented Leaders are SOLD ONLY by Stark Nurseries — BEWARE of Imitations!

"SELECTED" Cherry Trees

Record-Bearing Strains	EACH RATE (1 to 10) Trees	10 RATE (10 to 30) Trees
4 to 7 ft. size	\$2.00	\$1.75
3 to 5 ft. size	1.75	1.50

SWEET—25c extra

- **Dyehouse
- *Early Richmond
- *Montmorency King
- *Montmorency Monarch
- Royal Duke
- **Suda Hardv
- *Bing
- Gov. Wood
- *Napoleon
- *Royal Ann
- Schmidt's Bigerreau
- *Seneca—\$1.00 Extra
- Windsor

Stark PLUM Trees

(VERY Scarce—Order Early)

Record-Bearing Strains	EACH
3 to 5 ft. size	\$2.00
2 to 3 ft. size	1.75

Listed in order of Ripening, earliest first, etc.

- VERY EARLY
- EARLY
- MID-SEASON
- LATE
- VERY LATE
- **EARLY GOLD (Shiro) Red June
- *Santa Rosa
- *America
- Abundance
- Compass
- **INDIAN BLOOD (Duarte)(Red Flesh) Superior Underwood
- *Omaha (Sweet, hardy) Burbank
- *Late Goose
- *Lombard Impr. (Tatge)
- *Tatge
- **STARK GREEN GAGE
- Prune, Stanley
- *Prune, German
- Prune, Italian
- *Damson Shropshire
- **Stark Big Damson
- ***Elephant Heart (\$1.25 per tree more than above prices.)
- **June Blood
- **Mammoth Cardinal
- **Monster
- **Orange Plumcot
- **Purple Plumcot
- **Purple Flame
- **Red Ace
- **Flaming Delicious
- **Great Yellow
- **Honey-Moon
- **June Red Skin

Burbank's New PLUM Creations

U. S. Patented and Exclusive Trees, SOLD ONLY by STARK BRO'S

Prices—\$1.00 a tree more than Plum prices above.

***Elephant Heart (\$1.25 per tree more than above prices.)

**June Blood

**Mammoth Cardinal

**Monster

**Orange Plumcot

**Purple Plumcot

**Purple Flame

**Red Ace

**Flaming Delicious

**Great Yellow

**Honey-Moon

**June Red Skin

Stark CRAB APPLE Trees

(VERY Scarce—Order Early)

Record-Bearing Strains	(1 to 10) Trees	(10 to 30) Trees
4 to 7 ft. size	\$2.00	\$1.75
3 to 5 ft. size	1.75	1.50

**VIRGINIA—Red. Fine for Jelly, Pickles, Cider. 25c extra.

**STARK FLORENCE—Makes beautiful red jelly.

**STARK GOLD—Makes jelly like honey.

*Dolge—For pickles, preserves, jelly—pink blooms.

STARK DEWBERRIES

*Lucretia

BOYSENBERRY (Spring Shipment Only)

Boysenberry

Boysenberry, Thornless

ORDER BLANK

STARK BRO'S NURSERIES, Louisiana, Mo.

Date _____ Subject to terms and conditions of your current Price List and the following agreement, ship Nursery Stock as listed, for which I enclose \$ _____

The following agreement, between the undersigned and Stark Brothers Nurseries and Orchards Company, of Louisiana, Missouri, refers to the purchase by the undersigned of STARKING (Trade-Mark) (Stark Bro's Double-Red Delicious) apple trees and (or) GOLDEN DELICIOUS (Trade-Mark) apple trees and (or) STAYMARED (Trade-Mark) apple trees and (or) HAL-BERTA GIANT (Trade-Mark) peach trees and (or) any of the LUTHER BUREN NEW TREE OR PLANT VARIETIES. Owing to the great expense of the wide-spread testing and investigation of these valuable trees and plants, and the great cost of their introduction, Stark Brothers Nurseries and Orchards Company is protecting itself as well as the public from the imposition and substitution often practiced by unscrupulous dealers. This is intended to prevent fakers from misbranding and marketing inferior fruits as genuine. Furthermore, this will enable growers who purchase Genuine Stark Trees or plants of the above named varieties to reap the reward of the high price on the markets for the fruit of these high quality trees and plants without having the damaging influence of bogus and inferior sorts which may be attempted to be marketed as genuine. Thus the reputation for long keeping, high quality and big profits of these fruits will be maintained and protected by the cooperation of Stark Brothers Nurseries and Orchards Company and the purchasers of any of the above named varieties. Therefore, in consideration of the agreement of the undersigned not to give away or sell or permit anyone else to give away or sell or to take these STARKING (Trade-Mark) apple trees and (or) GOLDEN DELICIOUS (Trade-Mark) apple trees and (or) STAYMARED (Trade-Mark) apple trees and (or) HAL-BERTA GIANT (Trade-Mark) peach trees and (or) any of the LUTHER BUREN NEW TREE OR PLANT VARIETIES or their progeny or their buds or cuttings from these trees herein mentioned or their progeny or any other STARKING (Trade-Mark) apple trees and (or) GOLDEN DELICIOUS (Trade-Mark) apple trees and (or) STAYMARED (Trade-Mark) apple trees and (or) HAL-BERTA GIANT (Trade-Mark) peach trees and (or) any of the LUTHER BUREN NEW TREE OR PLANT VARIETIES or their progeny after any such trees and (or) plants are so furnished and the further consideration of the sale of any of the foregoing trees and (or) plants named in this purchase agreement, Stark Brothers Nurseries and Orchards Company agrees to furnish the varieties named in this purchase agreement, which are herein ordered, to the undersigned. The undersigned agrees that in case of disposition of the property on which any nursery stock sold by Seller Company proves untrue to name as labeled, Seller Company agrees, on a condition of the transfer. In the event that any nursery stock sold by Seller Company proves untrue to name as labeled, Seller Company agrees, on satisfactory proof to it of such untrue name, to refill that portion of the order so proven to it to be untrue to name, or, at its option, to refund the purchase price paid therefor. If Seller Company is notified the first fruiting or blooming season — and as the Seller Company does not give any warranty, expressed or implied, in respect to any nursery stock sold by it, the purchaser, or any one else's damages, if any, for any breach of this contract, or any special contract herein contained, by Seller Company, shall be limited to the refunding of that portion of the order, or to the refunding of the purchase price paid therefor, as above stated. I also understand that Patented Varieties purchased by me are protected by U. S. Patent Laws. I have read, understand and hereby agree to all these agreements and terms of sale.

Name _____ P. O. _____ State _____

Sign Your NAME and ADDRESS PLAINLY

If you want this order shipped to another person or to a different address from that shown above, give directions here.

Street or R. F. D. _____ Do Not Write In This Space

A-2

BIN	HOW MANY	SIZE	VARIETIES	PRICES		Do Not Write In Space Below
				Each	Total	
2			STARK GOLDEN DELICIOUS Apple New, Youngest Bearer 2 Year Trees Bore in 38 States—Trade-Mark			Amt.....
1			STARKING Apple—New Double-Red Delicious Bears Younger, Finest Flavored Red Apple—Trade-Mark			C. D.....
3			JON-A-RED—Double-Red Jonathan Apple—Quick Bearer New—U. S. Patent—Sold ONLY by Stark Nurseries			Cash.....
4			SCARLET STAYMARED—Triple-Red Stayman Winesap NEW—U. S. Patent Apple—Sold ONLY by Stark Nurseries			Cr.....
25			STARK GOLD—SWEET—Hardy, Quick Bearing Cherry Stood 30° Below Zero—Trade-Mark—Sold ONLY by Stark			Bal.....
27			MONTMORENCY STARK—World's-Great Tart Cherry Large, Winner in Bearing Tests—Sold ONLY by Stark Nurseries			Fr..... Prepaid.....
157			WORLD'S EARLIEST—Trade-Mark—Earliest Known Peach. Resembles Red Bird. Better. 10 Days Earlier.			Exp..... Collect.....
47			BURBANK'S JULY ELBERTA—New U. S. Patent Peach Greatest Early Yellow Freestone—Burbank's Best Peach Creation			Mail..... C. O. D.....
50			HAL-BERTA GIANT—NEW—World's Largest Peach Golden Freestone—U. S. Patent—Sold ONLY by Stark			S/O Checker.....
48			STARK EARLY ELBERTA—Finest Flavored Peach SUMMER GLEASON, Trade-Mark—Sold ONLY by Stark			

PRICE

New HOME YARD Victory Orchards

All Best Quality, Top Size, Stark Trees

The U. S. Government's New Victory Garden Advisory Committee Program, sent out to all 48 states, urges:

"Grow fruit for family consumption on every farm and suburban homestead possible"

Every bushel of your own fruit your living cost—makes your family healthier—releases that much more fruit for our armed forces and war workers. Also releases needed transportation, to help win the war.

We offer these 1/2 Price Victory Quick-Bearing Fruit Collections as a win-the-war contribution to help you have a Victory Fruit Garden of your own—NOW! Offered for Fall 1943 ONLY—Subject to withdrawal without notice. If any variety is exhausted, our experts will select a variety of equal or greater value.

You Get FREE PLANTING PLAN with this Collection No. 7 F

Collection No. 7 F

Big COMPLETE 1 ACRE FARM HOME VICTORY ORCHARD AND VINEYARD

Regular Price \$93.95..... **YOU SAVE \$46.98**

(When Ordering, Just Write—COLLECTION No. 7 F—\$46.97)

- 4 Starking, Double-Red Delicious Apple
- 4 Stark Golden Delicious Apple
- 2 Staymared Apple
- 2 Jonared Apple
- 2 Rome Beauty, Double-Red Apple
- 2 Jonathan, Young Bearing Apple
- 2 McIntosh - Double-Red Apple
- 2 Stayman Winesap Apple
- 1 Stark Delicious Apple
- 1 Early Red Bird Apple
- 1 Henry Clay Apple
- 1 Yellow Transparent Apple
- 1 Wilson Red June Apple
- 1 Jeffers Double-Red Apple
- 1 Early McIntosh Apple
- 1 Duchess, Double-Red Apple
- 1 Winesap Apple
- 1 Stark Gold Sweet Cherry
- 1 Windsor, Black Sweet Cherry
- 1 Montearly Cherry
- 2 Montmorency Stark Cherry
- 1 Montlate Cherry
- 1 Dyehouse Cherry
- 1 World's Earliest (Trade-Mark) Peach
- 1 Golden Jubilee Peach
- 2 Burbank's July Elberta Peach
- 1 Halehaven Peach
- 1 Stark Early Elberta Peach
- 1 J. H. Hale Peach
- 1 Hal-Berta Giant Peach
- 1 Omaha Plum
- 10 Blue Grape (2 year)
- 10 White Grape (2 year)
- 10 Red Grape (2 year)

Collection No. 6 F

You Get FREE PLANTING PLAN with this Collection No. 6 F

1/2 ACRE VICTORY HOME ORCHARD

Regular Price \$41.90..... **YOU SAVE \$20.95**

(When Ordering, Just Write—COLLECTION No. 6 F—\$20.95)

- 2 Starking, Double-Red Delicious Apple
- 2 Stark Golden Delicious Apple
- 1 Staymared Apple
- 1 Jonared—Bright Red Jonathan Apple
- 1 Stark Delicious Apple
- 1 Jonathan, Young Bearing Apple
- 1 Rome Beauty, Double-Red Apple
- 1 Early Red Bird Apple
- 1 Henry Clay Apple
- 1 Stark Gold Sweet Cherry
- 1 Montearly, U. S. Patent Cherry
- 1 Montmorency Stark Cherry
- 1 Montlate, U. S. Patent Cherry
- 1 World's Earliest (Trade-Mark) Peach
- 1 Burbank's July Elberta Peach
- 1 Stark Early Elberta Peach
- 1 J. H. Hale Peach
- 1 Hal-Berta Giant Peach
- 1 Stark Late Elberta Peach
- 2 Blue Grape
- 2 Red Grape
- 2 White Grape

Our Best Varieties, ripening from early to late.

Collection No. 5 F

You Get FREE PLANTING PLAN with this Collection No. 5 F

New "HOME YARD" Victory Orchard
Regular Price \$24.00..... **YOU SAVE \$12.00**

(When Ordering, Just Write—COLLECTION No. 5 F—\$12.00)

- 1 Stark Golden Delicious Apple
- 1 Starking Double-Red Delicious Apple
- 1 Jonared, Double-Red Jonathan Apple
- 1 Staymared Double-Red Stayman Apple
- 1 Henry Clay—Earliest Yellow Apple
- 1 Early Red Bird—Earliest of all apples
- 1 Rome Beauty, Double-Red
- 1 Hal-Berta Giant Peach
- 1 Burbank's July Elberta Peach
- 1 Stark Early Elberta Peach
- 1 J. H. Hale Peach
- 1 Montmorency Stark Cherry
- 1 Stark Gold Sweet Cherry
- 3 Grapes—1 Red, 1 White, 1 Blue

Collection No. 4 F

BIG LEADER Orchard

Only \$13.37 Regular Price \$26.75..... **YOU SAVE \$13.38**

(When Ordering, Just Write—COLLECTION No. 4 F—\$13.37)

- 1 Starking, Double-Red Delicious Apple
- 1 Stark Golden Delicious Apple
- 1 Jonared, Double-Red Jonathan Apple
- 1 Jonathan, Young Bearing Apple
- 1 Staymared Apple
- 1 Early Red Bird Apple
- 1 Montearly, U. S. Patent Cherry
- 1 Stark Gold Cherry
- 1 Montmorency Stark Cherry
- 1 World's Earliest Peach
- 1 Burbank's July Elberta Peach
- 1 Stark Early Elberta Peach
- 1 J. H. Hale Peach
- 1 Hal-Berta Giant Peach

Collection No. 2 F

New FAMILY APPLE Orchard

Only \$8.00 Regular Price \$16.00..... **YOU SAVE \$8.00**

(When Ordering, Just Write—COLLECTION No. 2 F—\$8.00)

- 1 Starking, Double-Red Delicious Apple
- 1 Stark Golden Delicious Apple
- 1 Jonared Apple
- 1 Staymared Apple
- 1 Stayman Winesap Apple
- 1 Rome Beauty, Double-Red Apple
- 1 McIntosh—Double-Red Apple
- 1 Duchess, Double-Red Apple
- 1 Early Red Bird Apple
- 1 Yellow Transparent Apple

Collection No. 9 F

ALL SEASON Peaches

Ripening in succession from earliest to latest
Regular Price \$23.10..... **YOU SAVE \$11.55**

(When Ordering, Just Write—COLLECTION No. 9 F—\$11.55)

- Very Early**
- 1 World's Earliest
- 1 Red Bird Cling
- 1 June Elberta
- Early**
- 1 Golden Jubilee
- 2 Burbank's July Elberta
- 2 Stark Early Elberta
- Mid-Season**
- 2 Elberta Queen
- 1 J. H. Hale
- 1 Hal-Berta Giant
- Very Late**
- 1 Stark Late Elberta
- 1 Krummel October

Best Grade--Top Size Trees

7 Big Apple Trees 2 Big Cherry Trees 3 Big Grape Vines—
4 Big Peach Trees 1 Sweet, 1 Sour 1 Red, 1 White, 1 Blue



"HOME YARD" victory orchard

COLLECTION No. 5 F—Only \$12.00 . . . Regular price \$24.00—YOU SAVE \$12.00

- 1 Stark Golden Delicious Apple
- 1 Starking Double-Red Delicious Apple
- 1 Jonared, Double-Red Jonathan Apple
- 1 Staymared Double-Red Stayman Apple
- 1 Henry Clay—Earliest yellow apple
- 1 Early Red Bird—Earliest of all apples
- 1 Rome Beauty, Double-Red

- 1 Hal-Berta Giant Peach
- 1 Burbank's July Elberta Peach
- 1 Stark Early Elberta Peach
- 1 J. H. Hale Peach
- 1 Montmorency Stark Cherry
- 1 Stark Gold Sweet Cherry
- 3 Grapes—1 Red, 1 White, 1 Blue

this \$24.00 orchard
FOR ONLY



You Can Eat
Delicious Fresh
Fruit from
Early Spring
till Late Fall,
and Can for
Winter, too!

To Encourage Fall Planting
WE STAND 1/2 THE COST
OF VICTORY FRUIT TREE COLLECTIONS

This 1/2 Price Collection offers you trees of amazing new improvements in fruit. More luscious, more beautifully colored, bigger fruit!

Many of these better varieties are so new and different that they have been awarded U. S. Patents and Trade-Marks—as much better than usual varieties as prize winning cattle are better than scrubs. Varieties bred and selected to bear younger—even one year gained will pay for the trees.

For Other 1/2 Price Collections



QUICK BEARING VICTORY FRUIT GARDEN SPECIALS

It's Easy to Grow Your Own Fruit
When You Plant Genuine
Stark Record-Bearing Strain Trees

You are offered marvelous new varieties selected and bred to bear years younger; break all traditions for size of fruit and bushels per tree—luscious new varieties, propagated only by Stark Bro's. Trees which are given head start by Stark Extra Heavy Whole Root Grafting Method. Trees that are "fattened" with rich plant food in specially selected soils—ready to start thrifty growth and bear big crops quickly.

Return Postage



A-2
GUARANTEED

STARK BRO'S NURSERIES
LOUISIANA, MO.

POSTMASTER: If undeliverable to addressee, be sure to state reason hereon and return to sender at once.
Return Postage GUARANTEED

Sec. 562, P. L. & R.
U. S. POSTAGE
PAID
Permit No. 1
Louisiana, Mo.

